

TENDER DOCUMENT



Project Name	Project Number
DESIGN AND CONSTRUCTION OF MOKHURUMELA STORMWATER CHANNEL- EROSION PROTECTION (TURNKEY PROJECT)	BM09/21/22

Contact : Mr Makobela MM– Manager: SCM
Ms. Motsoko MMB- Manager- Roads and Storm-water
Maintenance

Tel : (015) 505 7100 **Fax** : (015) 505 0296

COMPANY NAME: _____

CONTACT NUMBER: _____

EMAIL ADDRESS: _____

TENDER AMOUNT (In figures): R_____

(IN WORDS): _____



VERY IMPORTANT NOTICE ON DISQUALIFICATIONS:

BY SUBMITTING THE BID, THE BIDDER UNDERTAKES TO ABIDE BY THE TERMS AND CONDITIONS OF THIS TENDER INCLUDING BUT NOT LIMITED TO THE RULES OUTLINED BELOW

- A bid not complying with the requirements stated hereunder will be regarded as not being an “Acceptable bid”, and as such will be rejected.
- “Acceptable bid” means any bid which, in all respects, complies with the conditions of bid and specifications as set out in the bid documents, including conditions as specified in the Preferential Procurement Policy Framework Act (Act 5 of 2000) and related legislation and regulations, in terms of which provision is made for this policy.
- In this document and other documents referred to but not attached, the following words are synonymous with each other.
 - a. CLIENT, EMPLOYER, BLOUBERG LOCAL MUNICIPALITY, MUNICIPALITY
 - b. BID, TENDER AND VARIATIONS THEREOF
 - c. JOINT VENTURE / CONSORTIUM
 - d. TENDERER, BIDDER, CONTRACTOR

1. FULL DESCRIPTION OF THE TENDER

1.1 Blouberg Local municipality would like to appoint a competent service provider registered on the national Central Supplier Database (CSD) on Turnkey basis for Design and construction of Mokhurumela Stormwater Channel-Erosion Protection.

2. RULES FOR BIDDING

- 2.1 The bidding entity shall be the same entity that will execute the bid. Any bid found to be fronting for another entity or entities shall be disqualified immediately.
- 2.2 All Bidders submitting bids as part of a consortium or joint venture must submit recent reports from CSD not older than three months.
- 2.3 Bidders may ask for clarification on these bid documents or any part thereof up to close of business week before the deadline for the submission of the bids.
- 2.4 The municipality reserves the right to return late bid submission unopened.
- 2.5 Bidders may not contact the municipality on any matter pertaining to their bid from the time when the bids are submitted to the time the contract is awarded. Any effort by a bidder to influence bid evaluation, bid comparisons or bid award decisions in any manner, may result in rejection of the bid concerned.
- 2.6 The appointed provider will be paid an amount claimed within thirty days upon the receipts of the invoice.
- 2.7 The appointed service provider will also bill the municipality for the agreed service rendered.
- 2.8 Bidders must attach proof of parties involved in the joint venture.
- 2.9 The Bid document must be properly signed by a party having the authority to do so, according to the example of "Authority or Signatory"
- 2.10 Bidders will be disqualified if Municipal rates and taxes or municipal service charges owed by the bidder or any of its directors to the municipality or municipal entity, are in arrears for more than three months from the date of the advert.
- 2.11 Bidders will be disqualified if:
- 2.11.1 Any bidders who during the last five (5) years has failed to perform satisfactorily on a previous contract with the municipality, municipal entity or any other organ of state after a reasonable written notice was given to that bidder that performance was unsatisfactory or appears on the register / database of defaulters.
- 2.11.2 they are bankrupt or being wound up, are having their affairs administered by the courts,

- 2.11.3 Have entered into an arrangement with creditors, have suspended business activities, are the subject of proceedings concerning those matters, or are in any analogous situation arising from a similar procedure provided for in national legislation or regulations;
- 2.11.4 Are guilty of misrepresentation in supplying the information required in the document as a condition of participation in the procurement procedure or fail to supply this information;
- 2.12 The accounting officer must ensure that irrespective of the procurement process followed, no award may be given to a person –
 - 2.12.1 Who is in the service of the state, or;
 - 2.12.2 If that person is not a natural person, of which any director, manager, principal shareholder or stakeholder, is a person in the service of the state; or;
 - 2.12.3 Who is an advisor or consultant contracted with the municipality in respect of contract that would cause conflict of interest
- 2.13 Bid offers will be rejected if the bidder or any of his/ her directors is listed on the Register of Bid Defaulters in terms of the Prevention and Combating of Corrupt Activities Act 12 of 2004 as a person prohibited from doing business with the public sector and all bids would be subjected to vetting.
- 2.14 Failure by the bidder to disclose with the bid submission any form of conflict of interest including disclosure on a person(s) who is in the service of the state or any immediate blood relative in the service of the state will lead to disqualification.
- 2.15 Bids received by telegram, fax or e-mail will not be considered. Late bids shall neither be accepted nor considered.
- 2.16 The municipality is not liable for any documents delivered via courier companies and by post. No official is going to sign the receipt of the bid document.
- 2.17 Bid documents must be submitted in a sealed envelope clearly marked with the project name and number.
- 2.18 Fully completed and signed bid documents must be deposited into the tender box located at Blouberg Municipality, next to reception office.



CONTENTS

PART T1: BIDDING PROCEDURES

- T1.1 Notice and Invitation to Bid (WHITE)
- T1.2 Bid Data..... (PINK)

PART T2: RETURNABLE DOCUMENT

- T2.1 Returnable Schedules required for Bid Evaluation
Purposes (YELLOW)
- T2.2 Other Documents required for Bid Evaluation Purposes
..... (YELLOW)
- T2.3 Returnable Schedules that will be incorporated in the
Contract (YELLOW)

THE CONTRACT

PART C1: PRICING DATA

- C1.1 Pricing Instructions..... (YELLOW)
- C1.2 Pricing Structure..... (YELLOW)

PART C2: AGREEMENT AND CONTRACT DATA

- C2.1 Form of Offer and Acceptance..... (WHITE)

PART C3: SCOPE OF WORKS

- C3.1 Description of Works..... (BLUE)
- C3.2 Engineering..... (BLUE)
- C3.2 Construction..... (BLUE)
- C3.4 Management..... (BLUE)

PART C4: SITE INFORMATION.....(WHITE)



T1.1 BID NOTICE AND INVITATION TO BID

Blouberg Local municipality would like to appoint a competent service provider registered on the national Central Supplier Database on Turnkey basis for Design and and construction of Mokhurumela Stormwater Channel-Erosion Protection.

The municipality will enter into a service level agreement with the appointed service provider to clarify terms and conditions for the duration of the project

Tender documents containing the Conditions of Tender, Evaluation criteria as well as the applicable procurement terms and conditions will be available as a day after the briefing session on E-tender portal (www.etender.gov.za) and Municipal Website (www.blouberg.gov.za)

NB! A compulsory site clarification meeting with the relevant representatives of the Municipality will take place as follows (All Covid-19 regulations will be observed):

Project Number	Bid Description	Compulsory Session	Site Briefing	Preference Point System	Closing Date and Time	Contact Person
BM09/21/22	Design and Construction of Mokhurumela Channel-Erosion Protection (Turnkey Project)	Date: 06 October 2021 Venue: Mokhurumela Time: 11h00		80/20 Preferential Points Functionality = 100. Equity = 20 (refer to the B-BBEE status level of contributor points table below)	DATE: 15/10/2021 TIME: 11H00	Mr. Makobela MM Ms. Motsoko MMB Tel: 015 505 7100

When downloaded from the municipal website, tender documents are uncontrolled and the responsibility lies with the bidder to ensure the printout is in line with the Authorized Version on the system.

Complete tender documents, fully priced and signed with all the necessary documents attached, must be sealed in an envelope marked "TENDER" Description of Project / Project Number" as mentioned above. The closing date for submission of Tender bids is **15/10/2021**

The Municipality shall adjudicate and award tenders in accordance with the Preferential Procurement Policy Framework of 2017, on 80/20-point system. Tenders will remain valid for 90 (ninety) days.

Enquiries related to this tender should be addressed to Ms. MMB Motsoko and Mr Makobela MM at (015) 505 7100 during working hours.

Municipal Address

**MR. MACHABA JUNIAS
MUNICIPAL MANAGER
BLOUBERG MUNICIPALITY
P.O BOX1593
SENWABARWANA
0790**

DESIGN AND CONSTRUCTION OF MOKHURUMELA STORMWATER CHANNEL-EROSION PROTECTION

T1.2 BID DATA

The **Standard Conditions of Bid** makes several references to the bid data for details that apply specifically to this bid. The bid data shall have precedence in the interpretation of any ambiguity or inconsistency between it and the standard conditions of bid.

Clause number	Data
F.1.1 ACTIONS	The Employer is: The Municipal Manager Blouberg Local Municipality 2 nd Building Dendron Road Senwabarwana 0790
F.1.4 COMMUNICATION AND EMPLOYER'S AGENT	The Employer's Agent is: Name: Ms. Motsoko MMB Address: 2 nd Building Dendron Road Senwabarwana 0790 Tel: 015 505 7100 Email: MotsokoM@blouberg.gov.za
F.2.1 ELIGIBILITY	<p>Only those tenderers who are registered with the CIDB, or can provide proof of having applied for registration, in a contractor grading designation equal to or higher than a contractor grading designation determined in accordance with the sum tendered for a 54CE or higher class of construction work, or by a contractor who is registered as a potentially emerging enterprise in terms of these Regulations at a contractor grading designation, one level higher than the contractor's registered grading designation, provided that the client</p> <p>(a) is satisfied that such a contractor has the potential to develop and qualify to be registered in that higher grade; and</p> <p>(b) ensures that financial, management or other support is provided to that contractor to enable the contractor to successfully execute that contract are eligible to submit tenders.</p> <p>Joint ventures are eligible to submit tenders provided that:</p> <ol style="list-style-type: none"> 1. every member of the joint venture is registered with the CIDB or can provide proof of having registered. 2. the lead partner has a contractor grading designation in the 5CE or higher class of construction work; and 3. the combined contractor grading designation calculated in accordance with the Construction Industry Development Regulations is equal to or higher than a contractor grading designation determined in accordance with the sum tendered for a 5CE or higher class of construction work are eligible to submit tenders. 4. Only tenderers who employ staff which satisfy EPWP requirements are eligible to submit tenders. The Tenderer must have a staff member who has completed, or is registered for training towards, the NQF level 5-unit standard "Develop and Promote Labour Intensive Construction Strategies"..

Clause number	Data
<p>F.2.12 ALTERNATIVE TENDER OFFERS</p>	<p>If a tenderer wishes to submit an alternative tender offer, the only criteria permitted for such alternative tender offer is that it demonstrably satisfies the employer's standards and requirements, the details of which may be obtained from the employer's Agent.</p> <p>Calculations, drawings and all other pertinent technical information and characteristics as well as modified or proposed Pricing Data must be submitted with the alternative tender offer to enable the employer to evaluate the efficacy of the alternative and its principal elements, to take a view on the degree to which the alternative complies with the employer's standards and requirements and to evaluate the acceptability of the pricing proposals. Calculations must be set out in a clear and logical sequence and must clearly reflect all design assumptions. Pricing Data must reflect all assumptions in the development of the pricing proposal.</p> <p>Acceptance of an alternative tender offer will mean acceptance in principle of the offer. It will be an obligation of the contract for the tenderer, in the event that the alternative is accepted, to accept full responsibility and liability that the alternative offer complies in all respects with the employer's standards and requirements.</p> <p>The modified Pricing Data must include an amount equal to 5% of the amount tendered for the alternative offer to cover the employer's costs of confirming the acceptability of the detailed design before it is constructed.</p>
<p>F.2.13.2 SUBMITTING A TENDER OFFER</p>	<p>The whole original bid document, as issued by the Municipality, shall be submitted. No copies will be accepted.</p> <p>Bids may only be submitted on the Bid documentation issued by the municipality</p>
<p>F.2.13.3 BRIEFING SESSION</p>	<p>Date: 06 October 2021 Venue: Mokhurumela Coordinates: 22°58'19"S 28°42'07"E Time: 11h00</p>
<p>F.2.14 CLOSING DATE & TIME</p>	<p>DATE: 15/10/2021 TIME: 11H00</p> <p>It is the responsibility of the tenderer to ensure that their tender is complete and reaches the correct address by the designated deadline. Late, faxed or e-mailed tenders will not be considered.</p>
<p>F.2.15 TENDER OFFER VALIDITY</p>	<ol style="list-style-type: none"> 1. The employer will have up to 90 days (working days) from the closing date within which to consider submitted bids. 2. The successful bidder will have up to 14 days to respond to the service offer.

Clause number	Data
<p>F.1.10 ADMINISTRATIVE COMPLIANCE</p>	<p>1.10.1 All bids duly lodged will be examined to determine compliance with bidding requirements and conditions. Bids with obvious deviations from the requirements/conditions will be eliminated from further evaluation.</p> <p>1.10.2 Critical Criteria</p> <p>The following critical criteria have been identified for this bid and any non-compliance thereto will lead to the bid being regarded as non-responsive and disqualified from further evaluation:</p> <ol style="list-style-type: none"> a. A valid original tax clearance certificate/Pin to be attached b. Certified COPY of the statement of municipal rates and taxes (not in arrears for more than three (3) months before the closing date), if renting a lease agreement and owner's up to date proof of municipal rates. If the bidder is operating where municipal rates are not applicable, a certified COPY of residence from the traditional authority must be submitted (not older than three (3) months before the closing date); c. Form of offer to be completed and signed d. Certified ID copies of all directors e. Site clarification meeting is compulsory f. Copy of Company Registration (CK) g. All attached MBD forms must be completed and signed h. Authority of signatory to be signed i. Proof of registration on National Treasury website(Summary of central database/CSD report) j. Insurance letter of intent k. JV Agreement submitted (where applicable) l. Proof of registration from CIDB m. Signed audited financial statement for the latest 3 financial years n. Attach B-BBEE certificate o. Valid letter of good standing from the Department of Labour (COIDA) p. Company Profile q. Tender document that has been disassembled and failure to use colour coded papers will lead to outright disqualification r. All pages to be initialised <p>Note: All copies must be certified except a copy of company registration. The certification must not be older than 3 months of the closing date Failure to attach the above documents will lead to automatic rejection of your Bid.</p>
<p>F.1.11 OPENING OF BID SUBMISSIONS</p>	<p>The time and location for opening of the bid offers</p> <p>Immediately after the closing time 11H00 on the closing date 15/10/2021</p> <p>Location: Blouberg Local Municipality- Old Municipal Building, 02nd Building Dendron Road, Senwabarwana, 0790</p>

Clause number	Data
	Any bid received after the deadline for submission of bids prescribed, will be rejected and/or returned unopened to the Bidder.
F.1.12 TWO-ENVELOPE SYSTEM	A two-envelope procedure will not be followed.
F.1.12 ARITHMETICAL ERRORS	<p>a) Where there is a discrepancy between the amounts in figures and in words, the amount in figures shall govern.</p> <p>b) If bills of quantities (or schedule of quantities or schedule of rates) apply and there is an error in the line item total resulting from the product of the unit rate and the quantity, <u>the rate shall govern and the line item total shall be corrected.</u></p> <p>c) Where there is an error in the total of the prices either as a result of corrections required by this checking process or in the tenderer's addition of prices, the total of the prices shall be adjusted to reflect the arithmetically correct summation of corrected line item totals.</p> <p>Consider the rejection of a tender offer if the tenderer does not accept the correction of the arithmetical errors in the manner described above.</p>
F.1.13 EVALUATION OF BID OFFERS	<p>Stage 1: The preference procedure for evaluation of responsive bid offers shall be the 80/20 - point preference system.</p> <ul style="list-style-type: none"> - where 80 points will be allocated in respect of price - 20 points will be allocated towards targeted goals
F.1.14 ACCEPTANCE OF BID OFFER	Bids containing any one or more of the errors or omissions, or bids not having complied with any one of the required bid conditions as detailed in this bid document, shall not be considered and shall automatically be rejected.
F.1.15 PROVIDE COPIES OF THE CONTRACTS	The number of paper copies of the signed contract to be provided by Blouberg Municipality is one .
ADDITIONAL CONDITIONS APPLICABLE TO THIS BID	<p>The additional conditions of bid are:</p> <ol style="list-style-type: none"> 1 The Employer may also request that the bidder provide written evidence on the adequacy of financial, labour and other resources for carrying out the contract. 2 The Employer reserves the right to appoint a firm of chartered accountants and auditors and/or execute any other financial investigations on the financial resources of any bidder. The bidder shall provide all reasonable assistance in such investigations. 3 The bidder shall be required to complete the Form of Offer and Acceptance (C1.1) and Bills of Quantity. 4 The bid document shall be submitted as a whole and shall not be submitted in parts.

Clause number	Data
	<p>5 List of returnable documents (PART T2) must be completed in full. (i.e.: A bidder's company profile will not be used by the BLM to complete PART T2 on behalf of the bidder)</p> <p>NB: If PART T2 is not completed in full by the bidder, the offer will be rejected.</p>

F.1 Standard Conditions of the Bid

F.1.1 Actions

The employer and each tenderer submitting a tender offer shall comply with these conditions of tender. In their dealings with each other, they shall discharge their duties and obligations as set out in F.2 and F.3, timeously and with integrity, and behave equitably, honestly with openness and transparency.

F.1.2 Tender Documents

The documents issued by the employer for the purpose of a tender offer are listed in the tender data.

F.1.3 Interpretation

F.1.3.1. the tender data and additional requirements contained in the tender schedules that are included in the returnable documents are deemed to be part of these conditions of tender.

F.1.3.2. these conditions of tender, the tender data and tender schedules which are only required for tender evaluation purposes, shall not form part of any contract arising from the invitation to tender.

F.1.3.3 For the purposes of these conditions for the calling of expressions of interest, the following definitions apply:

a) Comparative offer means the tenderer's financial offer after the factors of non-firm prices, all unconditional discounts and any other tendered parameters that will affect the value of the financial offer have been taken into consideration

b) Corrupt practice means the offering, giving, receiving or soliciting of anything of value to influence the action of the employer or his staff or agents in the tender process; and

c) Fraudulent practice means the misrepresentation of the facts in order to influence the tender process or the award of a contract arising from a tender offer to the detriment of the employer, including collusive practices intended to establish prices at artificial levels.

F.1.4 Communication and employer's agent

Each communication between the employer and a tenderer shall be to or from the employer's agent only, and in a form that can be read, copied and recorded. Writing shall be in the English language. The employer shall not take any responsibility for non-receipt of communications from or by a tenderer. The name and contact details of the employer's agent are stated in the tender data.

F.1.5 The employer's right to accept or reject any tender offer

F.1.5.1 The employer may accept or reject any variation, deviation, tender offer, or alternative tender offer, and may cancel the tender process and reject all tender offers at any time before the formation of a contract. The employer shall not accept or incur any liability to a tenderer for such cancellation and rejection, but will give written reasons for such action upon written request to do so.

F.1.5.2 The employer may not, subsequent to the cancellation or abandonment of a tender process or the rejection of all responsive tender offers re-issue a tender covering substantially the same scope of work within a period of three months.

F.2 Tenderer's obligations

F.2.1 Eligibility

Submit a tender offer only if the tenderer satisfies the criteria stated in the tender data and the tenderer, or any of his/ her principals, is not under any restriction to do business with the employer.

F.2.2 Cost of tendering

Accept that the employer will not compensate the tenderer for any costs incurred in the preparation and submission of a tender offer, including the costs of any testing necessary to demonstrate that aspects of the offer to satisfy requirements.

It is a term of this bid that the employer is indemnified from any liability arising or accruing from expenses or damages or losses incurred by the bidder including in the event the employer opts to cancel or discontinue the bidding process of this tender.

F.2.3 Check documents

Check the tender documents on receipt for completeness and notify the employer of any discrepancy or omission.

F.2.4 Confidentiality and copyright of documents

Treat as confidential all matters arising in connection with the tender. Use and copy the documents issued by the employer only for the purpose of preparing and submitting a tender offer in response to the invitation. The distribution of the tender documents is for the sole purpose of obtaining offers. The distribution does not grant permission or licence to use the documents for any other purpose. Tenderers are required to treat the details of all documents supplied in connection with the tender process as private and confidential. All responses to this invitation to tender will be treated in confidence and no information contained therein will be communicated to any third party without the written permission of the tenderer except in so far as is specifically required for the consideration and evaluation of the response or as may be required under law.

F.2.5 Reference documents

Obtain, as necessary for submitting a tender offer, copies of the latest versions of standards, specifications, conditions of contract and other publications, which are not attached but which are incorporated into the tender documents by reference.

F.2.6 Acknowledge addenda

Acknowledge receipt of addenda to the tender documents, which the employer may issue, and if necessary apply for an extension to the closing time stated in the tender data, in order to take the addenda into account.

F.2.7 Clarification meeting

Attend, where required, a clarification meeting at which tenderers may familiarize themselves with aspects of the proposed work, services or supply and raise questions. Details of the meeting are stated in the tender data.

F.2.8 Seek clarification

Request clarification of the tender documents, if necessary, by notifying the employer at least five (5) working days before the closing date stated in the tender data.

F.2.9 Insurance

Be aware that the extent of insurance to be provided by the employer (if any) might not be for the full cover required in terms of the conditions of contract identified in the contract data. The tenderer is required to seek adequate cover for covering liability that may arise in terms of international trips.

F.2.10 Pricing the tender offer

F.2.10.1 Include in the rates, prices, and the tendered total of the prices (if any) all duties, taxes, Value Added Tax (VAT), and other levies payable to the successful tenderer, such duties, taxes and levies being those applicable fourteen (14) days before the closing time stated in the tender data.

F.2.10.2 Provide rates and prices that are fixed for the duration of the contract, payable after delivery of the vehicles, subject to inspection by the Employer.

F.2.10.3 State the rates and prices in South African Rand.

F.2.10.4 The municipality has limited resources and bids must be competitive, with market related pricing, as this will be one of the deciding factors in the final award of the contract.

F.2.11 Alterations to documents

Do not make any alterations or additions to the tender documents, except to comply with instructions issued by the employer, or necessary to correct errors made by the tenderer. All signatories to the tender offer shall initial all such alterations. Erasures and the use of masking fluid or TIPPEX are prohibited.

F.2.12 Alternative tender offers

F.2.12.1 Submit alternative tender offers only if a main tender offer, strictly in accordance with all the requirements of the tender documents, is also submitted. The alternative tender offer is to be submitted with the main tender offer together with a schedule that compares the requirements of the tender documents with the alternative requirements of the tenderer proposes.

F.2.12.2 Accept that an alternative tender offer may be based only on the criteria stated in the tender data or criteria otherwise acceptable to the employer.

F.2.13 Submitting a tender offer

F.2.13.1 Submit a tender offer to provide the whole of the works, services or supply identified in the contract data and described in the scope of works, unless stated otherwise in the tender data.

F.2.13.2 Return all returnable documents to the employer after completing them in their entirety.

F.2.13.3 Submit the parts of the tender offer communicated on paper as an original plus the number of copies stated in the tender data, with an English translation of any documentation in a language other than English.

F.2.13.4 Sign the original copies of the tender offer where required in terms of the tender data. The employer will hold all authorized signatories liable on behalf of the tenderer. Signatories for tenderers proposing to contract as joint ventures shall state; which of the signatories is the lead partner whom the employer shall hold liable for the purpose of the tender offer.

F.2.13.5 Seal the original package marking the package as "ORIGINAL"

F.2.13.6 Seal the original tender offer package in an outer package that states on the outside only the employer's address and identification details as stated in the tender data.

F.2.13.7 Accept that the employer will not assume any responsibility for the misplacement or premature opening of the tender offer if the outer package is not sealed and marked as stated.

F.2.14 Information and data to be completed in all respects

Accept that tender offers, which do not provide all the data or information requested completely and in the form required, will be regarded by the employer as non-responsive.

F.2.15 Closing Time

F.2.15.1 Ensure that the employer receives the tender offer at the address specified in the tender data not later than the closing time stated in the tender data. Proof of posting shall not be accepted as proof of delivery. The employer shall not accept tender offers submitted by telegraph, facsimile or e-mail.

F.2.15.2 Accept that, if the employer extends the closing time stated in the tender data for any reason, the requirements of these conditions of tender apply equally to the extended deadline.

F.2.16 Tender Offer Validity

F.2.16.1 Hold the tender offer(s) valid for acceptance by the employer at any time during the validity period stated in the tender data after the closing time stated in the tender data.

F.2.16.2 If requested by the employer, consider extending the validity period stated in the tender data for an agreed additional period.

F.2.17 Clarification of tender offer after submission

Provide clarification of a tender offer in response to a request to do so from the employer during the evaluation of tender offers. This may include providing a breakdown of rates or prices and correction of arithmetical errors by the adjustment of certain rates or item prices (Or both).

No change in the competitive position of tenderers or substance of the tender offer is sought, offered, or permitted.

Note: Sub-clause F.2.17 does not preclude the negotiation of the final terms of the contract with a preferred tenderer following a competitive selection process, should the Employer elect to do so.

F.2.18 Provide other material

F.2.18.1 Provide, on request by the employer, any other material that has a bearing on the tender offer, the tenderer's commercial position (including notarized joint venture agreements), referencing arrangements, or samples of materials, considered necessary by the employer for the purpose of a full and fair risk assessment. Should the tenderer not provide the material, or a satisfactory reason as to why it cannot be provided, by the time for submission stated in the employer's request, the employer may regard the tender offer as non-responsive.

F.2.19 Inspections, tests and analysis

Provide access during working hours to premises for inspections, tests and analysis as provided for in the tender data.

F.2.20 Submit securities, bonds, policies, etc.

If requested, submit for the employer's acceptance before formation of the contract, all securities, bonds, guarantees, policies and certificates of insurance required in terms of the conditions of contract identified in the contract data.

F.2.21 Check final draft

Check the final draft of the contract provided by the employer within the time available for the employer to issue the contract.

F.2.22 Return of other tender documents

If so instructed by the employer, return all retained tender documents within twenty-eight (28) days after the expiry of the validity period stated in the tender data.

F.2.23 Certificates

Include in the tender submission or provide the employer with any certificates as stated in the tender data.

F.3 The employer's undertakings**F.3.1 Respond to clarification**

Respond to a request for clarification received up to five (5) working days before the tender closing time stated in the Tender Data and notify all tenderers who drew procurement documents.

F.3.2 Issue Addenda

If necessary, issue addenda that may amend or amplify the tender documents to each tenderer during the period from the date that tender documents are available until seven (7) days before the tender closing time stated in the Tender Data. If, as a result a tenderer applies for an extension to the closing time stated in the Tender Data, the Employer may grant such extension and, shall then notify all tenderers who drew documents.

F.3.3 Return late tender offers

Return tender offers received after the closing time stated in the Tender Data, unopened, (unless it is necessary to open a tender submission to obtain a forwarding address), to the tenderer concerned.

F.3.4 Opening of tender submissions

F.3.4.1 Unless the two-envelope system is to be followed, open valid tender submissions in the presence of tenderers' agents who choose to attend at the time and place stated in the tender data. Tender submissions for which acceptable reasons for withdrawal have been submitted will not be opened.

F.3.4.2 Announce at the meeting held immediately after the opening of tender submissions, at a venue indicated in the tender data, the name of each tenderer whose tender offer is opened, the total of his prices, preferences claimed and time for completion, if any, for the main tender offer only.

F.3.4.3 Make available the record outlined in F.3.4.2 to all interested persons upon a formal request.

F.3.5 Two-envelope system

F.3.5.1 Where stated in the tender data that a two-envelope system is to be followed, open only the technical proposal of valid tenders in the presence of tenderers' agents who choose to attend at the time and place stated in the tender data and announce the name of each tenderer whose technical proposal is opened.

F.3.5.2 Evaluate the quality of the technical proposals offered by tenderers, then advise tenderers who remain in contention for the award of the contract of the time and place when the financial proposals will be opened. Open only the financial proposals of tenderers, who score in the quality evaluation more than the minimum number of points for quality stated in the tender data, and announce the score obtained for the technical proposals and the total price and any preferences claimed. Return unopened financial proposals to tenderers whose technical proposals failed to achieve the minimum number of points for quality.

F.3.6 Non-disclosure

Not disclose to tenderers, or to any other person not officially concerned with such processes, information relating to the evaluation and comparison of tender offers, the final evaluation price and recommendations for the award of a contract, until after the award of the contract to the successful tenderer.

F.3.7 Grounds for rejection and disqualification

Determine whether there has been any effort by a tenderer to influence the processing of tender offers and instantly disqualify a tenderer (and his tender offer) if it is established that he engaged in corrupt or fraudulent practices.

F.3.8 Test for responsiveness

F.3.8.1 Determine, after opening and before detailed evaluation, whether each tender offer properly received:

- a. Complies with the requirements of these Conditions of Tender,
- b. Has been properly and fully completed and signed, and
- c. Is responsive to the other requirements of the tender documents.

F.3.8.2 A responsive tender is one that conforms to all the terms, conditions, and specifications of the tender documents without material deviation or qualification. A material deviation or qualification is one which, in the Employer's opinion, would:

- a. Detrimentially affect the scope, quality, or performance of the works, services or supply identified in the Scope of Work,
- b. Change the Employer's or the tenderer's risks and responsibilities under the contract,
- c. Affect the competitive position of other tenderers presenting responsive tenders, if it were to be rectified.

F.3.9 Arithmetical errors

F.3.9.1 Check responsive tender offers for arithmetical errors, correcting them in the following manner:

- a. Where there is a discrepancy between the amounts in figures and in words, the amount in figures shall govern.
- b. If bills of quantities (or schedule of quantities or schedule of rates) apply and there is an error in the line item total resulting from the product of the unit rate and the quantity, the rate shall govern and the total shall be corrected.
- c. Where there is an error in the total of the prices either as a result of other corrections required by this checking process or in the tenderer's addition of prices, the rate shall govern and the tenderer will be asked to revise selected item prices to achieve the tendered total of the prices.

F.3.9.2 Consider the rejection of a tender offer if the tenderer does not correct or accept the correction of his/her arithmetical errors in the manner described in F.3.9.1.

F.3.10 Clarification of a tender offer

Obtain clarification from a tenderer on any matter that could give rise to ambiguity in a contract arising from the tender offer.

F.3.11 EVALUATION METHODOLOGY

- In addition to all items highlighted under Page 2 titled **“Very Important Notice on Disqualifications”**, the tenders will be evaluated in terms of the Municipality Supply Chain Management policy, Preferential Procurement Framework Act (Act 5 of 2000) and its regulations as enacted in 2001.
- Tenders will be evaluated using the 80/20 points allocation system.

F.3.13 Acceptance of tender offer

F.3.13.1 Accept tender offer only if the tenderer complies with the legal requirements stated in the Tender Data.

F.3.13.2 Notify the successful tenderer of the employer's acceptance of his/her tender offer by completing and returning one copy of the form of offer and acceptance before the expiry of the validity period stated in the tender data, or agreed additional period. Providing the form of offer and acceptance does not contain any qualifying statements, it will constitute the formation of a contract between the employer and the successful tenderer as described in the form of offer and acceptance.

F.3.14 Notice to unsuccessful tenderers

After the successful tenderer has acknowledged the employer's notice of acceptance, the employer will publicise a list of bidders in the form of tender register on the municipal website

F.3.14 Municipality's right to accept or reject any or all Bids

The municipality reserves the right to:

- Accept or reject any bid;
- Annul the tender process and reject all bids at any time prior to contract award;
- Award the contract to one or more bidders; without thereby incurring any liability to the affected Bidder or bidders.
- Accept one or more bids submissions.
- Reject all bids submitted.
- Request further information from any bidder after the closing date.
- Cancel this bid or any part thereof any time, or
- Award this bid or any part thereof to any one or more bidders.
- Vary the site or number of sites and/or guards due to operational or budgetary requirements.

F.3.15. Prepare contract documents

Revise documents that shall form part of the contract and that were issued by the employer as part of the tender documents to take account of:

- addenda issued during the tender period,
- inclusion of the returnable documents,
- other revisions agreed between the employer and the successful tenderer, and
- the schedule of deviations attached to the form of offer and acceptance, if any.

F.3.16 Issue final contract

Prepare and issue the final draft of contract documents to the successful tenderer for acceptance within fourteen (14) days after the date of the employer's signing of the form of offer and acceptance (including the schedule of deviations, if any). Only those documents that the conditions of tender require the tenderer to submit, after acceptance by the employer, shall be included.

F.3.17 Provide copies of the contracts

Provide to the successful tenderer the number of copies stated in the Tender Data of the signed copy of the contract as soon as possible after completion and signing of the form of offer and acceptance.

3. List of attachments required for Evaluation Purposes

- d. A valid original tax clearance certificate/Pin to be attached
- e. Certified **COPY** of the statement of municipal rates and taxes (not in arrears for more than three (3) months before the closing date), if renting a lease agreement and owner's up to date proof of municipal rates. If the bidder is operating where municipal rates are not applicable, a certified **COPY** of residence from the traditional authority must be submitted (not older than three (3) months before the closing date);
- f. Form of offer to be completed and signed
- g. Certified ID copies of all directors
- h. Site clarification meeting is compulsory
- i. Copy of Company Registration (CK)
- j. All attached MBD forms must be completed and signed
- k. Authority of signatory to be signed
- l. Proof of registration on National Treasury website(Summary of central database/CSD report)
- m. Insurance letter of intent
- n. JV Agreement submitted (where applicable)
- o. Proof of registration from CIDB
- p. Signed audited financial statement for the latest 3 financial years
- q. Attach original B-BBEE certificate or sworn affidavit
- r. Valid letter of good standing from the Department of Labour (COIDA)
- s. Company Profile
- t. Tender document that has been disassembled and failure to use colour coded papers will lead to outright disqualification
- u. All pages to be initialised

4. EVALUATION METHODOLOGY

4.1 Evaluation of bid offers

Administrative Requirements refer to List of Attachments Required for Evaluation Purpose.

This bid will be evaluated and adjudicated according to the criteria below:

- Relevant specification
- Functionality as per tender data
- Compliance to Tender Specification
- MFMA & Supply Chain Management Regulations
- Blouberg Local Municipality Supply Chain Management Policy

4.2 Bids will be evaluated in terms of the following two stages:

Stage 1: Evaluation on functionality

Under functionality, bidders must achieve a minimum of 75% for functionality (quality) in order to be considered for further evaluation in stage 2 (Evaluation on Price and BBBEE). Bidders that score less than a minimum of 75% will be disqualified.

The minimum cut-off points for functionality is 75% out of 90 points and any bidder scoring less than 75% will not be considered for further evaluation.

Item	Criterion	Weighting
A	Company/entity's experience in roads projects. Score will be based on successfully executed and completed road projects over the last five years.	40
B	Specific personnel knowledge score will be based on qualifications, years' experience on roads projects.	25
C	Plants and equipment necessary for construction	15
D	Financial Status	10
	TOTAL	90

Tenderers to submit the required information as stated below. Non-submission will result in loss of points.

Service Providers that qualified pre-evaluation in terms of cutoff points of 75 points will then be evaluated in terms of 80/20 preference points system.

A. Company relevant experience

Company Experience	Weight	Ratings
<ul style="list-style-type: none"> - Successfully completed project of similar nature of above three million at least 3 or more - Appointment letters - Final completion letters 	40	Poor = 1 Average = 2 Good = 3 Very good = 4 Excellent = 5

B. Specific knowledge (construction of roads) attached certified copy of qualifications and curriculum vitae.

Management Key Staff	Weight	Ratings
Project Engineer <ul style="list-style-type: none"> - Minimum BSC/B-Tech: Civil Engineering - professional registration with ECSA - Minimum work experience of 08 years. 	10	Poor = 1 Average = 2 Good = 3 Very good = 4 Excellent = 5
Resident Engineer <ul style="list-style-type: none"> - Minimum National Diploma: Civil Engineering - Professional registration with ECSA - Minimum work experience of 5 years. 	05	Poor = 1 Average = 2 Good = 3 Very good = 4 Excellent = 5
Site Agent	05	Poor = 1 Average = 2

- Minimum National Diploma: Civil Engineering - Minimum work experience of 3 years.		Good = 3 Very good = 4 Excellent = 5
Safety Officer - Minimum National Diploma: Occupational Health and Safety - Minimum 5 year work experience or equivalent	05	Poor = 1 Average = 2 Good = 3 Very good = 4 Excellent = 5
Maximum Points	25	

Note: referees provided to be contactable to confirm the value and completion certificates provided.

C. Specific plant and equipment

Plant and Equipment	Weight	Ratings
At least 01 x excavator, 2 x Graders, 1 x TLB, 4 x Tipper Trucks, 2 x Self propelled smooth roller, 1 x 16000L water tanker	15	Poor = 1 Average = 2 Good = 3 Very good = 4 Excellent = 5
Maximum points	15	

This will be assessed against a minimum number of different types of plant and equipment required to complete the project within the stipulated construction as determined by the employer.

Access to plant may be in form of ownership, hire or leasing agreement orders etc. A stamped letter of intent to hiring and leasing companies stating the number and type of plant and equipment on which agreement has been made will be accepted.

D. Financial Status

No	Weight	Ratings
Bank Rating A	10	Poor = 1 Average = 2 Good = 3 Very good = 4 Excellent = 5
Maximum points	10	

Certified copy of BBBEE certificate, and a trust, consortium or joint venture will qualify for points for their B-BBEE status level as an unincorporated entity, provided that the entity submits their consolidated B-BBEE scorecard as if they were a group structure and that such a consolidated B-BBEE scorecard is prepared for every separate bid.

- Bidders are required to submit original and valid B-BBEE Status Level Verification Certificates or certified copies thereof together with their bids, to substantiate their B-BBEE rating claims.
- Bidders who do not submit B-BBEE Status Level Verification Certificates or are non-compliant contributors to B-BBEE do not qualify for preference points for BBBEE but should not be disqualified from the bidding process. They will score points out of 90 or 80 for price only and zero (0) points out of 10 or 20 for BBBEE.
- A trust, consortium or joint venture must submit a consolidated BBBEE Status Level Verification Certificate for every separate bid.

- Public entities and tertiary institutions must also submit B-BBEE Status Level

NOTE: In order for the Tenderer to claim points for Experience under Functionality, the Tenderer must also attach the following proof for each of the completed projects.

- **Copy of Appointment Letter, and**
- **Copy of Completion Certificate.**

A bid shall not be disqualified from the bidding process if the bidder does not submit a certificate substantiating the B-BBEE status level of contribution nor is a non-compliant contributor. Such a bidder will score zero (0) out of a maximum of 20 points for B-BBEE.

The points scored for price shall be added to the points scored for B-BBEE status level of contribution to obtain the bidder's total points scored out of 100.

Award of contract to bids not scoring the highest number of points

- (a) A contract must be awarded to the bidder who scored the highest total number of points in terms of the method of evaluation used.
- (b) In exceptional circumstances a contract may, on reasonable and justifiable grounds, be awarded to a bidder that did not score the highest number of points. The reasons for such a decision must be approved and recorded for audit purposes and must be defensible in a court of law.

Evaluation of bids that scored equal points

- (a) If two or more bids have equal points, in functionality, the successful bid must be the one scoring the highest score for B-BBEE
- (b) In the event that two or more bids have scored equal total points, the successful bid must be the one that scored the highest points in terms of functionality
- (c) In the event that two or more bids are equal in all respects, the award must be decided by the drawing of lots.

Stage 2: Evaluation on Price 80/20 and BBBEE status

2.1 Financial offer and evaluation on price points

- ✓ Score Bid evaluation points for financial offer.
- ✓ Confirm that Bidders are eligible for the BBBEE claimed, and if so, score Bid evaluation points for BBBEE.
- ✓ Calculate total Bid evaluation points (Price points plus BBBEE points)
- ✓ Rank Bid offers from the highest number of Bid evaluation points to the lowest.
- ✓ The bidder obtaining the highest number of total points will be awarded the contract.
- ✓ Preference points shall be calculated after prices have been brought to a comparative basis taking into account all factors of non-firm prices and all unconditional discounts;.
- ✓ Points scored must be rounded off to the nearest 2 decimal places.
- ✓ In the event that two or more bids have scored equal total points, the successful bids must be the one scoring the highest number of preference points for B-BBEE.
- ✓ However, when functionality is part of the evaluation process and two or more bids have scored equal points including equal preference points for B-BBEE, the successful bid must be the one scoring the highest score for functionality.
- ✓ Should two or more bids be equal in all respects, the award shall be decided by the drawing of lots.

2.2 Price formula

DESIGN AND CONSTRUCTION OF MOKHURUMELA STORMWATER CHANNEL-EROSION PROTECTION

$$N_p = \frac{80[1 - (P_t - P_{min})]}{P_{min}}$$

- Where: N_p = the number of bid/tender adjudication points awarded for price.
- P_t = the bid/tender sum (corrected if applicable) of the responsive bid under consideration.
- P_{min} = the bid/tender sum (corrected if applicable) of the lowest responsive tender/bid.

2.3 Scoring for BBBEE

- a. Bids will be evaluated in accordance with the prescripts of the Preferential Procurement Policy Framework Act (PPPFA) and the associated Preferential Procurement Regulations of 2011, which stipulate a 80/20 point split for requirements not exceeding R50 000 000.00
- b. Bidders must attach certified copies of BBBEE to claim BBBEE points. Failure to attach the valid BBBEE points shall not disqualify the Bidder from further evaluation; but only points will be forfeited.
- c. **B-BBEE Status Level of Contributor Number of points (80/20 system)**

Preferential Elements	20 Points
B-BBEE Status Level of Contributor	Number of Points (80/20 system)
1	20
2	18
3	16
4	12
5	8
6	6
7	4
8	2
Non-compliant contributor	0



PART T2 LIST OF RETURNABLE DOCUMENTS

The bidder must complete the following returnable documents.

- T2.1 RETURNABLE SCHEDULES REQUIRED FOR BID EVALUATION PURPOSES
- T2.2 OTHER DOCUMENTS REQUIRED FOR BID EVALUATION PURPOSES
- T2.3 RETURNABLE SCHEDULES THAT WILL BE INCORPORATED IN THE CONTRACT
- T2.4 OTHER DOCUMENTS THAT WILL BE INCLUDED IN THE CONTRACT

NOTE:

Although the documents under Part T2 is headed “Returnable Documents” in line with the CIDB model, these are not the only documents to be returned together with the bid. **All** the documents indicated on Part T1 must be completed and signed where applicable and submitted as a **complete set of documents**.

T2.1 RETURNABLE SCHEDULES REQUIRED FOR BID EVALUATION PURPOSES

CONTENTS

FORM 2.1.1: SIZE OF ENTERPRISE AND CURRENT WORKLOAD

FORM 2.1.2: CERTIFICATE OF AUTHORITY FOR JOINT VENTURE (WHERE APPLICABLE)

FORM 2.1.3: SCHEDULE OF PREVIOUS WORK CARRIED OUT BY BIDDER

FORM 2.1.5: FINANCIAL REFERENCES

FORM 2.1.6: DETAILS OF ALTERNATIVE BIDS SUBMITTED

FORM 2.1.7: AMENDMENTS & QUALIFICATIONS BY BIDDER

[PLEASE NOTE: IT IS COMPULSORY FOR ALL FORMS TO BE COMPLETED. WRITE N/A ACROSS THE TABLE IF NOT APPLICABLE. ANNEX SIGNATURE EVEN IF YOU WROTE N/A]

FORM 2.1.1 SIZE OF ENTERPRISE AND CURRENT WORKLOAD

- a) Total Turnover in the previous financial year? R_____
- b)
- c) Estimated turnover for current financial year? R_____

List your current contracts (IF ANY) and obligations [maximum]:

Description	Location	Value (R)	Start date	Duration	Expected completed date

FORM 2.1.2 CERTIFICATE OF AUTHORITY FOR JOINT VENTURE [WRITE N/A IF NOT APPLICABLE]

PLEASE ATTACHED A CERTIFIED COPY OF THE CERTIFICATE

FORM 2.1.3 SCHEDULE OF PREVIOUS WORK CARRIED OUT BY BIDDER
[N.B.NOT COMPULSORY]

Provide the following information on **relevant previous experience**. Indicate comparable projects of similar or larger size. This information is material to the award of the Contract.

Give a minimum of two (2) names and telephone numbers and e-mail address per reference. Please provide latest contact details.

CLIENT NAME AND PLACE WHERE PROJECT WAS IMPLEMENTED	TEL NO & EMAIL ADDRESS	DESCRIPTION OF WORK	CONTRACT VALUE (R)	DURATION CONTRACT PERIOD
	<hr/> <hr/>			
	<hr/> <hr/>			
	<hr/> <hr/>			

FORM 2.1.4 **SCHEDULE OF PROPOSED SUB-CONTRACTORS**
[IF NOT WRITE N/A ACROSS THE TABLE]

Provide details on all sub-contractors you intend utilising for this contract

Type of work to be used for	a % of contract	Name of sub-contractor	B % HDI ownership	c = a x b Total contribution to HDI ownership
Total % of contract sub-contracted		Total contribution of HDI ownership:		

FORM 2.1.5 FINANCIAL REFERENCES

DETAILS OF BIDDING ENTITY'S BANK

If the bidder is a Joint Venture or partnership, the information requested below is required for each member / partner.

I / We hereby authorise the Employer to approach all or any of the following banks for the purposes of obtaining a financial reference:

DESCRIPTION OF BANK DETAIL	BANK DETAILS APPLICABLE TO BIDDER
Name of bank	
Contact person	
Branch name & code	
Street address	
Bank Telephone number	()
Account number	
Type of account, (i.e. cheque account)	

FORM 2.1.6 **DETAILS OF ALTERNATIVE BIDS SUBMITTED**
[WRITE N/A ACROSS THE TABLE IF NOT APPLICABLE]

See condition of bid.

DESCRIPTION

FORM 2.1.7 AMENDMENTS AND QUALIFICATIONS BY BIDDER
[WRITE N/A ACROSS THE TABLE IF NOT APPLICABLE]

See condition of bid

Attach additional information on a separate sheets and initial all of them

PAGE	DESCRIPTION



T2.2 OTHER DOCUMENTS REQUIRED FOR BID EVALUATION PURPOSES

CONTENTS

FORM 2.2.1	DECLARATION
FORM 2.2.2	DECLARATION OF INTEREST
FORM 2.2.3	MBD 9

FORM 2.2.1 DECLARATION:

I/ We, the undersigned:

- (a) Bid to provide to BLOUBERG LOCAL MUNICIPALITY (BLM) with described both in this and the other Schedules to this Contract to which I shall annex my signature;
- (b) Agree that we will be bound by the specifications, prices, terms and conditions stipulated in those Schedules attached to this bid document, regarding execution of duties;
- (c) Further agree to be bound by those conditions, set out in, "PARTS T1; T2; C1; C2; and C3", attached hereto, should this bid be accepted;
- (d) Confirm that this bid may only be accepted by BLOUBERG Local Municipality by way of a duly authorised Letter of Acceptance within fourteen (14) days from the date of appointment;
- (e) Declare that we are fully acquainted with the Bid document and Schedules and the contents thereof and that we have signed the Bill of Quantities and completed the Returnable Schedules and declarations, attached hereto;
- (f) Declare that all amendments to the bid document have been initialled by the relevant authorised person and that the document constitutes a proper contract between BLM and the undersigned;
- (g) Certify that the item/s mentioned in the bid document, qualifies/qualify for the preference(s) shown;
- (h) Acknowledge that the information furnished is true and correct;
- (i) Accept that in the event of the contract being awarded as a result of preference claimed in this bid document, I may be required to furnish documentary proof to the satisfaction of BLM that the claims are correct. If the claims are found to be inflated, BLM may in addition to any other remedy it may have, recover from the company or me all costs, losses or damages incurred or sustained by BLM as a result of the award of the contract and/or cancel the contract and claim any damages which BLM may suffer by having to make less favourable arrangements after such cancellation;
- (j) Declare that no municipal rates and taxes or municipal service charges owed by the bidding company or any of its directors to the municipality, or to any other municipality or municipal entity, are in arrears; and
- (k) Declare that I have not failed to perform satisfactorily during the last five (5) years on a previous contract with the Municipality, Municipal entity or any other organ of state, after written notice was given to me that my performance was not satisfactory.

[PLEASE SIGN ON BEHALF OF THE BIDDER]

Signed at _____ on this ____ day of _____ 20 _____

Authorised Signature: _____

Name of Bidding Entity: _____

Date: _____

As witness: _____

FORM 2.2.2 MBD4 DECLARATION OF INTEREST

1. No bid will be accepted from persons in the service of the state including in instances of non-directors of the entity and also those who may be sub-contracting.

2. Any person, having a kinship with persons in the service of the state, including a blood relationship, may make an offer or offers in terms of this invitation to bid. In view of possible allegations of favouritism, should the resulting bid, or part thereof, be awarded to persons connected with or related to persons in service of the state, it is required that the bidder or their authorised representative declare their position in relation to the evaluating/adjudicating authority and/or take an oath declaring his/her interest.

3 In order to give effect to the above, the following questionnaire must be completed with honesty and submitted with the bid.

Full Name: _____

Identity Number: _____

Tax Number: _____

VAT Number: _____

3.1 Are you presently in the service of the state* **YES / NO** _____

If yes, furnish particulars _____

3.2 Have you been in the service of the state for the past twelve (12) months? **YES / NO**

If yes, furnish particulars _____

3.3 Do you have any relationship (family, friend, other) with persons in the service of the state and who may be involved with the evaluation and or adjudication of this bid?

YES / NO _____

If yes, furnish particulars _____

3.4 Are any of the company's directors, managers, shareholders or stakeholders in service of the state? **YES / NO**

* SCM Regulations: "in the service of the state" means to be –

(a) a member of –

- (i) any municipal Council;
- (ii) any provincial legislature; or
- (iii) the national Assembly or the national Council of provinces;

(b) a member of the board of directors of any municipal entity;

(c) an official of any municipality or municipal entity;

(d) an employee of any national or provincial department, national or provincial public entity or constitutional institution within the meaning of the Public Finance Management Act, 1999 (Act No.1 of 1999);

(e) a member of the accounting authority of any national or provincial public entity; or

(f) an employee of Parliament or a provincial legislature.

If yes, furnish particulars _____

3.5 Are any spouse, child or parent of the company's directors, managers, principle shareholders or stakeholders in service of the state? **YES / NO**

If yes, furnish particulars _____

I, THE UNDERSIGNED (NAME) _____

CERTIFY THAT THE INFORMATION FURNISHED ON THIS DECLARATION FORM IS CORRECT.

I ACCEPT THAT THE STATE MAY ACT AGAINST ME SHOULD THIS DECLARATION PROVE TO BE FALSE.

SHOULD THE INFORMATION REQUIRED ON THIS FORM NOT DULY BE SUPPLIED, THIS BID WILL BE AUTOMATICALLY REJECTED.

Signature

Date

Position

Company Name

**PREFERENCE POINTS CLAIM FORM IN TERMS OF THE PREFERENTIAL
PROCUREMENT REGULATIONS 2017**

1.

This preference form must form part of all bids invited. It contains general information and serves as a claim form for preference points for Broad-Based Black Economic Empowerment (B-BBEE) Status Level of Contribution

NB: BEFORE COMPLETING THIS FORM, BIDDERS MUST STUDY THE GENERAL CONDITIONS, DEFINITIONS AND DIRECTIVES APPLICABLE IN RESPECT OF B-BBEE, AS PRESCRIBED IN THE PREFERENTIAL PROCUREMENT REGULATIONS, 2017.

2. GENERAL CONDITIONS

2.1 The following preference point systems are applicable to all bids:

- the 80/20 system for requirements with a Rand value of up to R50 000 000 (all applicable taxes included); and
- the 90/10 system for requirements with a Rand value above R50 000 000 (all applicable taxes included).

2.2

- a) The value of this bid is estimated to **exceed/not exceed** R50 000 000 (all applicable taxes included) and therefore the preference point system shall be applicable; or
- b) Either the 80/20 or 90/10 preference point system will be applicable to this tender (*delete whichever is not applicable for this tender*).

2.3 Points for this bid shall be awarded for:

- (a) Price; and
- (b) B-BBEE Status Level of Contributor.

2.4 The maximum points for this bid are allocated as follows:

	POINTS
PRICE	
B-BBEE STATUS LEVEL OF CONTRIBUTOR	
Total points for Price and B-BBEE must not exceed	100

2.5 Failure on the part of a bidder to submit proof of B-BBEE Status level of contributor together with the bid, will be interpreted to mean that preference points for B-BBEE status level of contribution are not claimed.

- 2.6 The purchaser reserves the right to require of a bidder, either before a bid is adjudicated or at any time subsequently, to substantiate any claim in regard to preferences, in any manner required by the purchaser.

3. DEFINITIONS

- (a) **“B-BBEE”** means broad-based black economic empowerment as defined in section 1 of the Broad-Based Black Economic Empowerment Act;
- (b) **“B-BBEE status level of contributor”** means the B-BBEE status of an entity in terms of a code of good practice on black economic empowerment, issued in terms of section 9(1) of the Broad-Based Black Economic Empowerment Act;
- (c) **“bid”** means a written offer in a prescribed or stipulated form in response to an invitation by an organ of state for the provision of goods or services, through price quotations, advertised competitive bidding processes or proposals;
- (d) **“Broad-Based Black Economic Empowerment Act”** means the Broad-Based Black Economic Empowerment Act, 2003 (Act No. 53 of 2003);
- (e) **“EME”** means an Exempted Micro Enterprise in terms of a code of good practice on black economic empowerment issued in terms of section 9 (1) of the Broad-Based Black Economic Empowerment Act;
- (f) **“functionality”** means the ability of a tenderer to provide goods or services in accordance with specifications as set out in the tender documents.
- (g) **“prices”** includes all applicable taxes less all unconditional discounts;
- (h) **“proof of B-BBEE status level of contributor”** means:
- 1) B-BBEE Status level certificate issued by an authorized body or person;
 - 2) A sworn affidavit as prescribed by the B-BBEE Codes of Good Practice;
 - 3) Any other requirement prescribed in terms of the B-BBEE Act;
- (i) **“QSE”** means a qualifying small business enterprise in terms of a code of good practice on black economic empowerment issued in terms of section 9 (1) of the Broad-Based Black Economic Empowerment Act;
(1)
- (j) **“rand value”** means the total estimated value of a contract in Rand, calculated at the time of bid invitation, and includes all applicable taxes;

4. POINTS AWARDED FOR PRICE

4.1 THE 80/20 OR 90/10 PREFERENCE POINT SYSTEMS

A maximum of 80 or 90 points is allocated for price on the following basis:

80/20

or

90/10

$$P_s = 80 \left(1 - \frac{P_t - P_{\min}}{P_{\min}} \right) \quad \text{or} \quad P_s = 90 \left(1 - \frac{P_t - P_{\min}}{P_{\min}} \right)$$

Where

P_s = Points scored for price of bid under consideration

- Pt = Price of bid under consideration
Pmin = Price of lowest acceptable bid

5. POINTS AWARDED FOR B-BBEE STATUS LEVEL OF CONTRIBUTOR

5.1 In terms of Regulation 6 (2) and 7 (2) of the Preferential Procurement Regulations, preference points must be awarded to a bidder for attaining the B-BBEE status level of contribution in accordance with the table below:

B-BBEE Status Level of Contributor	Number of points (90/10 system)	Number of points (80/20 system)
1	10	20
2	9	18
3	6	14
4	5	12
5	4	8
6	3	6
7	2	4
8	1	2
Non-compliant contributor	0	0

6. BID DECLARATION

6.1 Bidders who claim points in respect of B-BBEE Status Level of Contribution must complete the following:

7. B-BBEE STATUS LEVEL OF CONTRIBUTOR CLAIMED IN TERMS OF PARAGRAPHS 1.4 AND 4.1

7.1 B-BBEE Status Level of Contributor: . =(maximum of 10 or 20 points)

(Points claimed in respect of paragraph 7.1 must be in accordance with the table reflected in paragraph 4.1 and must be substantiated by relevant proof of B-BBEE status level of contributor.

8. SUB-CONTRACTING

8.1 Will any portion of the contract be sub-contracted?

(Tick applicable box)

YES	<input type="checkbox"/>	NO	<input type="checkbox"/>
-----	--------------------------	----	--------------------------

8.1.1 If yes, indicate:

- i) What percentage of the contract will be subcontracted.....%
- ii) The name of the sub-contractor.....
- iii) The B-BBEE status level of the sub-contractor.....
- iv) Whether the sub-contractor is an EME or QSE
(Tick applicable box)

YES	<input type="checkbox"/>	NO	<input type="checkbox"/>
-----	--------------------------	----	--------------------------
- v) Specify, by ticking the appropriate box, if subcontracting with an enterprise in terms of Preferential Procurement Regulations,2017:

Designated Group: An EME or QSE which is at least 51% owned by:	EME √	QSE √
Black people	√	√
Black people who are youth		
Black people who are women		
Black people with disabilities		
Black people living in rural or underdeveloped areas or townships		
Cooperative owned by black people		
Black people who are military veterans		
OR		
Any EME		
Any QSE		

9. DECLARATION WITH REGARD TO COMPANY/FIRM

9.1 Name of company/firm:.....

9.2 VAT registration number:.....

9.3 Company registration number:.....

9.4 TYPE OF COMPANY/ FIRM

- Partnership/Joint Venture / Consortium
 - One person business/sole propriety
 - Close corporation
 - Company
 - (Pty) Limited
- [TICK APPLICABLE BOX]

9.5 DESCRIBE PRINCIPAL BUSINESS ACTIVITIES

.....

.....
.....
9.6 COMPANY CLASSIFICATION

- Manufacturer
 - Supplier
 - Professional service provider
 - Other service providers, e.g. transporter, etc.
- [TICK APPLICABLE BOX]

9.7 MUNICIPAL INFORMATION

Municipality **where** **business** **is** **situated:**
.....
Registered Account Number:
Stand Number:.....

9.8 Total number of years the company/firm has been in business:.....

9.9 I/we, the undersigned, who is / are duly authorised to do so on behalf of the company/firm, certify that the points claimed, based on the B-BBE status level of contributor indicated in paragraphs 1.4 and 6.1 of the foregoing certificate, qualifies the company/ firm for the preference(s) shown and I / we acknowledge that:

- i) The information furnished is true and correct;
- ii) The preference points claimed are in accordance with the General Conditions as indicated in paragraph 1 of this form;
- iii) In the event of a contract being awarded as a result of points claimed as shown in paragraphs 1.4 and 6.1, the contractor may be required to furnish documentary proof to the satisfaction of the purchaser that the claims are correct;
- iv) If the B-BBEE status level of contributor has been claimed or obtained on a fraudulent basis or any of the conditions of contract have not been fulfilled, the purchaser may, in addition to any other remedy it may have –
 - (a) disqualify the person from the bidding process;
 - (b) recover costs, losses or damages it has incurred or suffered as a result of that person’s conduct;
 - (c) cancel the contract and claim any damages which it has suffered as a result of having to make less favourable arrangements due to such cancellation;
 - (d) recommend that the bidder or contractor, its shareholders and directors, or only the shareholders and directors who acted on a fraudulent basis, be restricted by the National Treasury from obtaining business from any organ of state for a period not exceeding 10 years, after the *audi alteram partem* (hear the other side) rule has

- been applied; and
(e) forward the matter for criminal prosecution.

WITNESSES

1.

2.

.....
SIGNATURE(S) OF BIDDERS(S)

DATE:

ADDRESS

.....

.....

1. CONTRACT FORM - PURCHASE OF GOODS/WORKS

THIS FORM MUST BE FILLED IN DUPLICATE BY BOTH THE SUCCESSFUL BIDDER (PART 1) AND THE PURCHASER (PART 2). BOTH FORMS MUST BE SIGNED IN THE ORIGINAL SO THAT THE SUCCESSFUL BIDDER AND THE PURCHASER WOULD BE IN POSSESSION OF ORIGINALLY SIGNED CONTRACTS FOR THEIR RESPECTIVE RECORDS.

2. PART 1 (TO BE FILLED IN BY THE BIDDER)

3. I hereby undertake to supply all or any of the goods and/or works described in the attached bidding documents to (name of institution)..... in accordance with the requirements and specifications stipulated in bid number..... at the price/s quoted. My offer/s remain binding upon me and open for acceptance by the purchaser during the validity period indicated and calculated from the closing time of bid.
4. The following documents shall be deemed to form and be read and construed as part of this agreement:
 - (i) Bidding documents, viz
 - Invitation to bid;
 - Tax clearance certificate;
 - Pricing schedule(s);
 - Technical Specification(s);
 - Preference claims for Broad Based Black Economic Empowerment Status Level of Contribution in terms of the Preferential Procurement Regulations 2011;
 - Declaration of interest;
 - Declaration of bidder's past SCM practices;
 - Certificate of Independent Bid Determination;
 - Special Conditions of Contract;
 - (ii) General Conditions of Contract; and
 - (iii) Other (specify)
5. I confirm that I have satisfied myself as to the correctness and validity of my bid; that the price(s) and rate(s) quoted cover all the goods and/or works specified in the bidding documents; that the price(s) and rate(s) cover all my obligations and I accept that any mistakes regarding price(s) and rate(s) and calculations will be at my own risk.
6. I accept full responsibility for the proper execution and fulfilment of all obligations and conditions devolving on me under this agreement as the principal liable for the due fulfilment of this contract.
7. I declare that I have no participation in any collusive practices with any bidder or any other person regarding this or any other bid.

8. I confirm that I am duly authorised to sign this contract.

NAME (PRINT)

CAPACITY

SIGNATURE

NAME OF FIRM

DATE

WITNESSES	
1
2.
DATE:	

CONTRACT FORM - PURCHASE OF GOODS/WORKS

9. PART 2 (TO BE FILLED IN BY THE PURCHASER)

1. I..... in my capacity as..... accept your bid under reference numberdated.....for the supply of goods/works indicated hereunder and/or further specified in the annexure(s).
2. An official order indicating delivery instructions is forthcoming.
3. I undertake to make payment for the goods/works delivered in accordance with the terms and conditions of the contract, within 30 (thirty) days after receipt of an invoice accompanied by the delivery note.

ITEM NO.	PRICE (ALL APPLICABLE TAXES INCLUDED)	BRAND	DELIVERY PERIOD	B-BBEE STATUS LEVEL OF CONTRIBUTION	MINIMUM THRESHOLD FOR LOCAL PRODUCTION AND CONTENT (if applicable)

4. I confirm that I am duly authorized to sign this contract.

SIGNED ATON.....

NAME (PRINT)

SIGNATURE

OFFICIAL STAMP

WITNESSES

1.
2.

1 DECLARATION OF BIDDER’S PAST SUPPLY CHAIN MANAGEMENT PRACTICES

- 2 This Municipal Bidding Document must form part of all bids invited.
- 3 It serves as a declaration to be used by municipalities and municipal entities in ensuring that when goods and services are being procured, all reasonable steps are taken to combat the abuse of the supply chain management system.
- 4 The bid of any bidder may be rejected if that bidder, or any of its directors have:
 - a. abused the municipality’s / municipal entity’s supply chain management system or committed any improper conduct in relation to such system;
 - b. been convicted for fraud or corruption during the past five years;
 - c. willfully neglected, reneged on or failed to comply with any government, municipal or other public sector contract during the past five years; or
 - d. been listed in the Register for Tender Defaulters in terms of section 29 of the Prevention and Combating of Corrupt Activities Act (No 12 of 2004).
- 5 **In order to give effect to the above, the following questionnaire must be completed and submitted with the bid.**

Item	Question	Yes	No
4.1	<p>Is the bidder or any of its directors listed on the National Treasury’s Database of Restricted Suppliers as companies or persons prohibited from doing business with the public sector?</p> <p>(Companies or persons who are listed on this Database were informed in writing of this restriction by the Accounting Officer/Authority of the institution that imposed the restriction after the <i>audi alteram partem</i> rule was applied).</p> <p>The Database of Restricted Suppliers now resides on the National Treasury’s website(www.treasury.gov.za) and can be accessed by clicking on its link at the bottom of the home page.</p>	Yes <input type="checkbox"/>	No <input type="checkbox"/>
4.1.1	If so, furnish particulars:		
4.2	<p>Is the bidder or any of its directors listed on the Register for Tender Defaulters in terms of section 29 of the Prevention and Combating of Corrupt Activities Act (No 12 of 2004)?</p> <p>The Register for Tender Defaulters can be accessed on the National Treasury’s website (www.treasury.gov.za) by clicking on its link at the bottom of the home page.</p>	Yes <input type="checkbox"/>	No <input type="checkbox"/>

4.2.1	If so, furnish particulars:		
4.3	Was the bidder or any of its directors convicted by a court of law (including a court of law outside the Republic of South Africa) for fraud or corruption during the past five years?	Yes <input type="checkbox"/>	No <input type="checkbox"/>
4.3.1	If so, furnish particulars:		
Item	Question	Yes	No
4.4	Does the bidder or any of its directors owe any municipal rates and taxes or municipal charges to the municipality / municipal entity, or to any other municipality / municipal entity, that is in arrears for more than three months?	Yes <input type="checkbox"/>	No <input type="checkbox"/>
4.4.1	If so, furnish particulars:		
4.5	Was any contract between the bidder and the municipality / municipal entity or any other organ of state terminated during the past five years on account of failure to perform on or comply with the contract?	Yes <input type="checkbox"/>	No <input type="checkbox"/>
4.7.1	If so, furnish particulars:		

CERTIFICATION

**I, THE UNDERSIGNED (FULL NAME)
 CERTIFY THAT THE INFORMATION FURNISHED ON THIS
 DECLARATION FORM TRUE AND CORRECT.**

**I ACCEPT THAT, IN ADDITION TO CANCELLATION OF A CONTRACT, ACTION
 MAY BE TAKEN AGAINST ME SHOULD THIS DECLARATION PROVE TO BE
 FALSE.**

.....
Signature

.....
Date

.....
Position

.....
Name of Bidder

FORM 2.2.3 CERTIFICATE OF INDEPENDENT BID DETERMINATION

- a) This Municipal Bidding Document (MBD) must form part of all bids¹ invited.
- b) Section 4 (1) (b) (iii) of the Competition Act No. 89 of 1998, as amended, prohibits an agreement between, or concerted practice by, firms, or a decision by an association of firms, if it is between parties in a horizontal relationship and if it involves collusive bidding (or bid rigging).²
- c) Treasury Regulation 16A9 prescribes that accounting officers and accounting authorities must take all reasonable steps to prevent abuse of the supply chain management system and authorizes accounting officers and accounting authorities to:
 - i. Disregard the bid of any bidder if that bidder, or any of its directors have abused the institution's supply chain management system and or committed fraud or any other improper conduct in relation to such system.
 - ii. Cancel a contract awarded to a supplier of goods and services if the supplier committed any corrupt or fraudulent act during the bidding process or the execution of that contract.
- d) This MBD serves as a certificate of declaration that would be used by institutions to ensure that, when bids are considered, reasonable steps are taken to prevent any form of bid-rigging.
- e) In order to give effect to the above, the attached Certificate of Bid Determination (MBD 9) must be completed and submitted with the bid:

¹ Includes price quotations, advertised competitive bids, limited bids and proposals.

² Bid rigging (or collusive bidding) occurs when businesses, that would otherwise be expected to compete, secretly conspire to raise prices or lower the quality of goods and / or services for purchasers who wish to acquire goods and / or services through a bidding process. Bid rigging is, therefore, an agreement between competitors not to compete.

CERTIFICATE OF INDEPENDENT BID DETERMINATION

I, the undersigned, in submitting the accompanying bid:

(Bid Number and Description)

in response to the invitation for the bid made by:

(Name of Institution)

do hereby make the following statements that I certify to be true and complete in every respect:

I certify, on behalf of

(Name of Bidder)

that:

1. I have read and I understand the contents of this Certificate;
2. I understand that the accompanying bid will be disqualified if this Certificate is found not to be true and complete in every respect;
3. I am authorized by the bidder to sign this Certificate, and to submit the accompanying bid, on behalf of the bidder;
4. Each person whose signature appears on the accompanying bid has been authorized by the bidder to determine the terms of, and to sign the bid, on behalf of the bidder;
5. For the purposes of this Certificate and the accompanying bid, I understand that the word "competitor" shall include any individual or organization, other than the bidder, whether or not affiliated with the bidder, who:
 - has been requested to submit a bid in response to this bid invitation;
 - could potentially submit a bid in response to this bid invitation, based on their qualifications, abilities or experience; and
 - provides the same goods and services as the bidder and/or is in the same line of business as the bidder
6. The bidder has arrived at the accompanying bid independently from, and without consultation, communication, agreement or arrangement with any competitor. However communication between partners in a joint venture or consortium³ will not be construed as collusive bidding.
7. In particular, without limiting the generality of paragraphs 6 above, there has been no consultation, communication, agreement or arrangement with any competitor regarding:
 - a) prices;
 - b) geographical area where product or service will be rendered (market allocation)
 - c) methods, factors or formulas used to calculate prices;

- d) the intention or decision to submit or not to submit, a bid;
 - e) the submission of a bid which does not meet the specifications and conditions of the bid; or bidding with the intention not to win the bid.
8. In addition, there have been no consultations, communications, agreements or arrangements with any competitor regarding the quality, quantity, specifications and conditions or delivery particulars of the products or services to which this bid invitation relates.
 9. The terms of the accompanying bid have not been, and will not be, disclosed by the bidder, directly or indirectly, to any competitor, prior to the date and time of the official bid opening or of the awarding of the contract.
 10. Joint venture or Consortium means an association of persons for the purpose of combining their expertise, property, capital, efforts, skill and knowledge in an activity for the execution of a contract.
10. I am aware that, in addition and without prejudice to any other remedy provided to combat any restrictive practices related to bids and contracts, bids that are suspicious will be reported to the Competition Commission for investigation and possible imposition of administrative penalties in terms of section 59 of the Competition Act No 89 of 1998 and or may be reported to the National Prosecuting Authority (NPA) for criminal investigation and or may be restricted from conducting business with the public sector for a period not exceeding ten (10) years in terms of the Prevention and Combating of Corrupt Activities Act No 12 of 2004 or any other applicable legislation.

[PLEASE SIGN BELOW ON BEHALF OF THE BIDDER]

Signature

Date

Position

Name of Bidder



T2.3 RETURNABLE SCHEDULES THAT WILL BE INCORPORATED IN THE CONTRACT

CONTENTS

FORM 2.3.1 RECORD OF ADDENDA TO BID DOCUMENT **FORM 2.3.1RECORD OF ADDENDA TO BID DOCUMENTS**
[WRITE N/A ACROSS THE TABLE IF NOT APPLICABLE]

We confirm that the following communications received from the Procuring Department before the submission of this bid offer, amending the bid documents, have been taken into account in this bid offer:

	Date	Title or Details
1		
2		
3		
4		
5		
6		
7		
8		
9		
10		

Attach additional pages if more space is required.

[PLEASE SIGN BELOW FOR THE BIDDING COMPANY]

Signature of Authorized person: _____ Date: _____

Name of authorized person: _____ Position: _____

PART T3: TENDER SPECIFICATIONS

3.1 BID SPECIFICATION

SCOPE OF WORK

- (a) Design and construct the following with Labour-Intensive Methods or Techniques:
 - (a) Design of 2 km stormwater channel with erosion protection measures
 - (b) Design and construction of rectangular/box culverts complete with wing-walls
 - (c) Design a Labour Intensity Construction to create 15 Work Opportunities
 - (d) Backfilling and compaction of material to natural ground level
 - (e) Clearing and grubbing and spoiling the unwanted material.
- (b) Detailed and Priced Bill of Quantities.
- (c) Construction/Working drawings
- (d) Project management and fulltime supervision during construction stage.
- (e) Completion/Close-out Report and As-built drawings

3.2 PRICING SCHEDULE

No.	Description	Unit	Quantity	Rate	Total Amount
1.	Preliminaries and General	Prov Sum	1	R 100 000.00	R 100 000.00
2.	Provisional Sum for the payment of the CLO (R3900) for duration of the project (R3900p.m)	Prov Sum	1	R 15 600.00	R 15 600.00
3.	Provisional Sum for PSC sitting allowance (R175 per member per sitting, maximum of five members)	Prov Sum	1	R 3 500.00	R 3 500.00
4.	Handling fee for item 2 and 3.	%		R 19 100.00	
5.	Professional Fees(Design, Project management and Close out)	1	1		
6.	Construction of a 2km stormwater erosion protection with rectangular/box culverts complete with wingwalls		1		
6.	Supply and installation of project name board to be directed by the municipal officials.	Prov Sum	1		
Subtotal [excluding Vat]					
Vat at 15%					
Total [including vat]					



PART C2 AGREEMENT AND CONTRACT DATA

C2.1 FORM OF OFFER AND ACCEPTANCE

C2.2 CONTRACT DATA

C1.1 FORM OF OFFER AND ACCEPTANCE [COMPULSORY]

FORM OF OFFER AND ACCEPTANCE (AGREEMENT)

1. OFFER BY THE BIDDING COMPANY

The Employer, identified in the Acceptance signature block, has solicited offers to enter into a Turnkey contract in respect of the following works: Design and Construction of Stormwater Channel-Erosion Protection. The Bidder, identified in the Offer signature block below, has examined the documents listed in the Bid Data and addenda thereto as listed in the Bid Schedules, and by submitting this Offer has accepted the Conditions of Bid.

By the representative of the Bidder, deemed to be duly authorised, signing this part of this Form of Offer and Acceptance, the Bidder offers to perform all of the obligations and liabilities of the Contractor under the Contract including compliance with all its terms and conditions according to their true intent and meaning for an amount to be determined in accordance with the Conditions of Contract identified in the Contract Data.

THE OFFERED TOTAL BID PRICE INCLUSIVE OF VALUE ADDED TAX

IN WORDS:

(IN FIGURES), R

This Offer may be accepted by the Employer by signing the Acceptance part of this Form of Offer and Acceptance and returning one copy of this document to the Bidder before the end of the period of validity stated in the Bid Data, whereupon the Bidder becomes the party named as the Contractor in the Conditions of Contract identified in the Contract Data.

It is expressly agreed that no other matter whether in writing, oral communication or implied during the period between the issue of the Bid documents and the receipt by the Bidder of a completed signed copy of this Agreement shall have any meaning or effect in the contract between the parties arising from this Agreement.

FOR AND ON BEHALF ON THE BIDDER [PLEASE SIGN]:

Signature(s) _____

Name(s) _____ Capacity _____

(Bidding Company Name) _____

Name of Witness _____

Signature _____ Date: _____

2. ACCEPTANCE

By signing this part of this Form of Offer and Acceptance, the Employer identified below accepts the Bidder's Offer. In consideration thereof, the Employer shall pay the Contractor the amount due in accordance with the Conditions of Contract identified in the Contract Data. Acceptance of the Bidder's Offer shall form an agreement between the Employer and the Bidder upon the terms and conditions contained in this Agreement and in the Contract that is the subject of this Agreement.

The terms of the contract, are contained in

Part C1 Pricing Data

Part C2 Agreements and Contract Data, (which includes this Agreement)

Part C3 Scope of Work

AND Documents or parts thereof, which may be incorporated by reference into Parts C1 to C3 above.

Deviations from and amendments to the documents listed in the Bid Data and any addenda thereto listed in the Bid Schedules as well as any changes to the terms of the Offer agreed by the Bidder and the Employer during this process of offer and acceptance, are contained in the Schedule of Deviations attached to and forming part of this Agreement. No amendments to or deviations from said documents are valid unless contained in this Schedule, which must be duly signed by the authorised representative(s) of both parties.

The Bidder shall within two weeks after receiving a completed copy of this Agreement, including the Schedule of Deviations (if any), contact the Employer's agent (whose details are given in the Contract Data) to arrange the delivery of any bonds, guarantees, proof of

insurance and any other documentation to be provided in terms of the Conditions of Contract identified in the Contract Data. Failure to fulfil any of these obligations in accordance with those terms shall constitute a repudiation of this Agreement.

Notwithstanding anything contained herein, this Agreement comes into effect on the date when the Bidder receives one fully completed original copy of this document, including the Schedule of Deviations (if any). Unless the Bidder (now Contractor) within five working days of the date of such receipt notifies the Employer in writing of any reason why he cannot accept the contents of this Agreement, this Agreement shall constitute a binding contract between the parties.

It is expressly agreed that no other matter whether in writing, oral communication or implied during the period between the issue of the Bid documents and the receipt by the Bidder of a completed signed copy of this Agreement shall have any meaning or effect in the contract between the parties arising from this Agreement.

FOR THE EMPLOYER: BLOUBERG LOCAL MUNICIPALITY [TO BE SIGNED BY MUNICIPAL MANAGER]

Signature(s) _____

Name _____

Capacity _____

Name of Witness _____

Signature _____

Date _____

3. SCHEDULE OF DEVIATIONS [WRITE N/A IF NOT APPLICABLE]

Notes:

1. The extent of deviations from the bid documents issued by the Employer prior to the bid closing date is limited to those permitted in terms of the Conditions of Bid.
2. A Bidder's covering letter shall not be included in the final contract document. Should any matter in such letter, which constitutes a deviation as aforesaid become the subject of agreements reached during the process of offer and acceptance, the outcome of such agreement shall be recorded here.
3. Any other matter arising from the process of offer and acceptance either as a confirmation, clarification or change to the bid documents and which it is agreed by the Parties becomes an obligation of the contract shall also be recorded here.
4. Any change or addition to the bid documents arising from the above agreements and recorded here, shall also be incorporated into the final draft of the Contract.

1 Subject _____

Details _____

2 Subject _____

Details _____

3 Subject _____

Details _____

4 Subject _____

Details _____

By the duly authorised representatives signing this Schedule of Deviations, the Employer and the Bidder agree to and accept the foregoing Schedule of Deviations as the only deviations from and amendments to the documents listed in the Bid Data and addenda thereto as listed in the Bid Schedules, as well as any confirmation, clarification or change to the terms of the offer agreed by the Bidder and the Employer during this process of offer and acceptance.

It is expressly agreed that no other matter whether in writing, oral communication or implied during the period between the issue of the bid documents and the receipt by the Bidder of a completed signed copy of this Agreement shall have any meaning or effect in the contract between the parties arising from this Agreement.

FOR THE BIDDER [PLEASE SIGN]:

Signature(s) _____

Name(s) _____

Capacity _____

(Bidder's Name) _____

Name of Witness _____

Signature _____

Date: _____

FOR THE EMPLOYER: BLOUBERG LOCAL MUNICIPALITY [PLEASE SIGN]

Signature(s) _____

Name _____

Capacity _____

Name of Witness _____

Signature _____

Date _____



PART C2 PRICING DATA

C2.1 PRICING INSTRUCTIONS

- 1 The General Conditions of Contract, the Contract Data, the Specifications (including the Project Specifications) and the Drawings shall be read in conjunction with the Bill of Quantities.
- 2 The Bill comprises items covering the Contractor's profit and costs of general liabilities and of the construction of Temporary and Permanent Works.

Although the Bidder is at liberty to insert a rate of his own choosing for each item in the Bill, he should note the fact that the Contractor is entitled, under various circumstances, to payment for additional work carried out.

Clause 8 of each Standardized Specification, and the measurement and payment clause of each Particular Specification, read together with the relevant clauses of the Project Specifications, all set out which ancillary or associated activities are included in the rates for the specified operations.

- 3 Descriptions in the Bill of Quantities are abbreviated and may differ from those in the Standardized and Project Specifications. No consideration will be given to any claim by the Contractor submitted on such a basis. Should any requirement of the measurement and payment clause of the appropriate Standardized or Project Specification(s) be contrary to the terms of the Bill the requirement of the appropriate Standardized, Project, or Particular Specification as the case may be, shall prevail.
- 4 The amounts and rates to be inserted in the Bill of Quantities shall be the full inclusive amounts to the Employer for the work described under the several items. Such amounts shall cover all the costs and expenses that may be required in and for the: DESIGN AND CONSTRUCTION OF MOKHURUMELA STORMWATER CHANNEL-EROSION PROTECTION (TURN-KEY) and shall cover the costs of all general risks, profits, taxes (but excluding value-added tax), liabilities and obligations set forth or implied in the documents on which the Bid is based.
- 5 The quantities set out in the schedule of quantities are only approximate quantities. The quantities of work finally accepted and certified for payment, and not the quantities given in the schedule of quantities, will be used to determine payments to the contractor
6. An amount or rate shall be entered against each item in the Bill of Quantities, whether or not quantities are stated. An item against which no amount or rate is entered will be considered to be covered by the other amounts or rates in the Bill
7. The Bidder shall also fill in a rate against the items where the words "rate only" appear in the amount column. Although no work is foreseen under these items and no quantities are consequently given in the quantity column, the stated rates shall apply should work under these items actually be required
Should the Bidder group a number of items together and bid one sum for such group of items, the single stated sum shall apply to that group of items and not to each individual item, or should he indicate against any item that full compensation for such item has been included in another item, the rate for the item included in another item shall be deemed to be nil.

The stated rates, prices and sums shall, subject only to the provisions of the Conditions of Contract, remain valid irrespective of any change in the quantities during the execution of the Contract.

Rates quoted are fixed and quoted in ZAR currency; and shall not in any way be affected by rand/dollar exchange rate or any currency.

8 The quantities of work as measured and accepted and certified for payment in accordance with the Conditions of Contract, and not the quantities stated in the Bill of Quantities, will be used to determine payments to the Contractor. The validity of the Contract shall in no way be affected by differences between the quantities in the Bill of Quantities and the quantities certified for payment.

9 For the purposes of this Bill of Quantities, the following words shall have the meanings hereby assigned to them:

Unit: The unit of measurement for each item of work as defined in the Standardized, Project or Particular Specifications
Quantity: The number of units of work for each item
Rate: The payment per unit of work at which the Bidder bids to do the work. Should be quoted in ZAR currency only
Amount: The quantity of an item multiplied by the bid rate of the (same) item. Should be quoted in ZAR currency only
Sum: An amount tendered for an item, the extent of which is described in the Bill of Quantities, the Specifications or elsewhere, but of which the quantity of work is not measured in units. Should be quoted in ZAR currency only

10 The units of measurement indicated in the Bill of Quantities are metric units. The following abbreviations may appear in the Bill of Quantities:

% = percent h = hour
ha = hectare
kg = kilogram
kl = kilolitre
km = kilometre
km-pass = kilometre-pass
kPa = kilopascal
kW = kilowatt l = litre
m = metre
mm = millimetre
m² = square metre m²-pass = square metre-pass m³ = cubic metre m³-km = cubic metre-kilometre MN = meganewton
MN.m = meganewton-metre
MPa = megapascal
No. = number
Prov sum = Provisional sum
PC sum = Prime Cost sum
R/only = Rate only
sum = lump sum
t = ton (1000 kg)
W/day = Work day

THE CONTRACT

PART C3
PART C4

SCOPE OF WORKS
SITE INFORMATION

PART C3: SCOPE OF WORK

C3.1 DESCRIPTION OF WORKS

C3.2 ENGINEERING

C3.3 CONSTRUCTION

C3.4 MANAGEMENT

C3.1 DESCRIPTION OF WORKS

C3.1.1 Employer's Objectives

Blouberg Local Municipality, in consultation with the community, identified the need for the Design and Construction of Mokhurumela Stormwater Channel-Erosion Protection. The employer's objectives are to deliver public infrastructure using labour intensive methods in accordance with EPWP Guidelines.

Labour-intensive works

Labour-intensive works shall be constructed/maintained using local workers who are temporarily employed in terms of this Scope of Work.

Labour-intensive competencies of supervisory and management staff

Contractors shall engage supervisory and management staff in labour-intensive works that have completed the skills programme including Foremen/Supervisors at NQF "National Certificate: Supervision of Civil Engineering Construction Processes" and Site Agent/Manager at NQF level 5 "Manage labour-intensive Construction Processes" or equivalent QCTO qualifications.

C3.1.2 Overview of Works

The scope of works entails Design and Construction of Mokhurumela Stormwater Channel-Erosion Protection.

C3.1.3 Extent of Works

The major activities within the project will include, among other, the following;

- Supply and installation project name board as directed by the municipal official.
- Design and construction of a 2km storm-water erosion protection
- Clearing and grubbing and spoiling the unwanted material.
- Backfilling and compaction of material to natural ground level
- Design and Construction of rectangular/box culverts complete with wing-walls

All labour intensive works should be marked as Labour Intensive Construction (LIC) items in the Bill of Quantities and this development will be part of the Expanded Public Works Programme (EPWP).

C3.1.4 Location of the Works

The project is located at Mokhurumela Village, 76km northern side of Senwabarwana. Mokhurumela village is in Limpopo province within the Capricorn District Polokwane in the boundaries of the Blouberg Local Municipality.

C3.1.5 Labour Regulations

C3.1.5.1 Payment for the labour-intensive component of the works

Payment for works identified in clause 2.3 "the Extent of the Project" in the Project Specifications as being labour-intensive shall only be made in accordance with the provisions of the Contract if the works are constructed strictly in

accordance with the provisions of the scope of work. Any non-payment for such works shall not relieve the Contractor in any way from his obligations either in contract or in delict.

C3.1.5.2 Applicable labour laws

Sectorial determination 2: Civil engineering sector.

The Ministerial Determination for Special Public Works Programmes, issued in terms of the Basic Conditions of Employment Act of 1997 by the Minister of Labour in Government Notice N° R949 in Government Gazette 33665 of 22 October 2010, as reproduced below, shall apply to works described in the scope of work as being labour intensive and which are undertaken by unskilled or semi-skilled workers.

C3.1.7.3 Introduction

This document contains the standard terms and conditions for workers employed in elementary occupations on a Special Public Works Programme (SPWP). These terms and conditions do NOT apply to persons employed in the supervision and management of a SPWP.

In this document –

- (a) “department” means any department of the State, implementing agent or contractor;
- (b) “employer” means any department, implementing agency or contractor that hires workers to work in elementary occupations on a SPWP;
- (c) “worker” means any person working in an elementary occupation on a SPWP;
- (d) “elementary occupation” means any occupation involving unskilled or semi-skilled work;
- (e) “management” means any person employed by a department or implementing agency to administer or execute an SPWP;
- (f) “task” means a fixed quantity of work;
- (g) “task-based work” means work in which a worker is paid a fixed rate for performing 88 a task;
- (h) “task-rated worker” means a worker paid on the basis of the number of tasks completed;
- (i) “time-rated worker” means a worker paid on the basis of the length of time worked.

C3.1.7.4 Terms of Work

- (a) Workers on a SPWP are employed on a temporary basis.
- (b) A worker may NOT be employed for longer than 24 months in any five-year cycle on a SPWP.
- (c) Employment on a SPWP does not qualify as employment as a contributor for the purposes of the Unemployment Insurance Act 30 of 1966.

C3.1.7.5 Normal Hours of Work

An employer may not set tasks or hours of work that require a worker to work–

- (a) more than forty hours in any week
- (b) on more than five days in any week; and
- (c) for more than eight hours on any day.

- (d) An employer and worker may agree that a worker will work four days per week. The worker may then work up to ten hours per day.
- (e) A task-rated worker may not work more than a total of 55 hours in any week to complete the tasks allocated (based on a 40-hour week) to that worker.

C3.1.7.6 Meal Breaks

- (a) A worker may not work for more than five hours without taking a meal break of at least thirty minutes duration.
- (b) An employer and worker may agree on longer meal breaks.
- (c) A worker may not work during a meal break. However, an employer may require a worker to perform duties during a meal break if those duties cannot be left unattended and cannot be performed by another worker. An employer must take reasonable steps to ensure that a worker is relieved of his or her duties during the meal break.
- (d) A worker is not entitled to payment for the period of a meal break. However, a worker who is paid on the basis of time worked must be paid if the worker is required to work or to be available for work during the meal break.

C3.1.7.7 Special Conditions for Security Guards

- (a) A security guard may work up to 55 hours per week and up to eleven hours per day.
- (b) A security guard who works more than ten hours per day must have a meal break of at least one hour or two breaks of at least 30 minutes each.

C3.1.7.8 Daily Rest Period

- (a) Every worker is entitled to a daily rest period of at least eight consecutive hours. The daily rest period is measured from the time the worker ends work on one day until the time the worker starts work on the next day.

C3.1.7.9 Weekly Rest Period

- (a) Every worker must have two days off every week. A worker may only work on their day off to perform work which must be done without delay and cannot be performed by workers during their ordinary hours of work ("emergency work").

C3.1.7.10 Work on Sundays and Public Holidays

- (a) A worker may only work on a Sunday or public holiday to perform emergency or security work.
- (b) Work on Sundays is paid at the ordinary rate of pay.
- (c) A task-rated worker who works on a public holiday must be paid –
 - i. the worker's daily task rate, if the worker works for less than four hours;
 - ii. Double the worker's daily task rate, if the worker works for more than four hours.
- (d) A time-rated worker who works on a public holiday must be paid –
 - i. the worker's daily rate of pay, if the worker works for less than four hours on the public holiday;
 - ii. Double the worker's daily rate of pay, if the worker works for more than four hours on the public holiday.

C3.1.7.11 Sick Leave

- (a) Only workers who work four or more days per week have the right to claim sick-pay in terms of this clause.
- (b) A worker who is unable to work on account of illness or injury is entitled to claim one day's paid sick leave for every full month that the worker has worked in terms of a contract.
- (c) A worker may accumulate a maximum of twelve days' sick leave in a year.
- (d) Accumulated sick-leave may not be transferred from one contract to another contract.
- (e) An employer must pay a task-rated worker the worker's daily task rate for a day's sick leave.
- (f) An employer must pay a time-rated worker the worker's daily rate of pay for a day's sick leave.
- (g) An employer must pay a worker sick pay on the worker's usual payday.
- (h) Before paying sick-pay, an employer may require a worker to produce a certificate stating that the worker was unable to work on account of sickness or injury if the worker is –
 - i. absent from work for more than two consecutive days; or
 - ii. absent from work on more than two occasions in any eight-week period.
- (i) A medical certificate must be issued and signed by a medical practitioner, a qualified nurse or a clinic staff member authorized to issue medical certificates indicating the duration and reason for incapacity.
- (k) A worker is not entitled to paid sick-leave for a work-related injury or occupational disease for which the worker can claim compensation under the Compensation for Occupational Injuries and Diseases Act.

C3.1.7.12 Maternity Leave

- (a) A worker may take up to four consecutive months' unpaid maternity leave.
- (b) A worker is not entitled to any payment or employment-related benefits during maternity leave.
- (c) A worker must give her employer reasonable notice of when she will start maternity leave and when she will return to work.
- (d) A worker is not required to take the full period of maternity leave. However, a worker may not work for four weeks before the expected date of birth of her child or for six weeks after the birth of her child, unless a medical practitioner, midwife or qualified nurse certifies that she is fit to do so.
- (e) A worker may begin maternity leave –
- (f) four weeks before the expected date of birth; or
- (g) on an earlier date –
 - (i) if a medical practitioner, midwife or certified nurse certifies that it is necessary for the health of the worker or that of her unborn child; or
 - (ii) if agreed to between employer and worker; or
 - (iii) on a later date, if a medical practitioner, midwife or certified nurse has certified that the worker is able to continue to work without endangering her health.
- (h) A worker who has a miscarriage during the third trimester of pregnancy or bears a stillborn child may take maternity leave for up to six weeks after the miscarriage or stillbirth.
- (i) A worker who returns to work after maternity leave, has the right to start a new cycle of twenty-four months employment, unless the SPWP on which she was employed has ended

C3.1.7.12 Family responsibility leave

Workers, who work for at least four days per week, are entitled to three days paid family responsibility leave each year in the following circumstances –

- (a) when the employee's child is born;
- (b) when the employee's child is sick;
- (c) in the event of a death of –
 - (i) the employee's spouse or life partner;
 - (ii) the employee's parent, adoptive parent, grandparent, child, adopted child, grandchild or sibling.

C3.1.7.13 Statement of Conditions

An employer must give a worker a statement containing the following details at the start of employment –

- (a) the employer's name and address and the name of the SPWP;
- (b) the tasks or job that the worker is to perform; and
- (c) the period for which the worker is hired or, if this is not certain, the expected duration of the contract;
- (d) the worker's rate of pay and how this is to be calculated;
- (e) the training that the worker will receive during the SPWP.
- (f) An employer must ensure that these terms are explained in a suitable language to any employee who is unable to read the statement.
- (g) An employer must supply each worker with a copy of these conditions of employment.

C3.1.7.14 Keeping Records

Every employer must keep a written record of at least the following –

- (a) the worker's name and position;
- (b) in the case of a task-rated worker, the number of tasks completed by the worker;
- (c) in the case of a time-rated worker, the time worked by the worker;
- (d) payments made to each worker.
- (e) The employer must keep this record for a period of at least three years after the completion of the SPWP.

C3.1.7.15 Payment

- (a) An employer must pay all wages at least monthly in cash or by cheque or into a bank account.
- (b) A task-rated worker will only be paid for tasks that have been completed.
- (c) An employer must pay a task-rated worker within five weeks of the work being completed and the work having been approved by the manager or the contractor having submitted an invoice to the employer.
- (d) A time-rated worker will be paid at the end of each month.
- (e) Payment must be made in cash, by cheque or by direct deposit into a bank account designated by the worker.
- (f) Payment in cash or by cheque must take place –
 - i. at the workplace or at a place agreed to by the worker;
 - ii. during the worker's working hours or within fifteen minutes of the start or finish of work
 - iii. in a sealed envelope which becomes the property of the worker.

C3.1.7.16 An employer must give a worker the following information in writing –

- (a) the period for which payment is made;
- (b) the numbers of tasks completed or hours worked;
- (c) the worker's earnings;
- (d) any money deducted from the payment;
- (e) the actual amount paid to the worker.
- (f) If the worker is paid in cash or by cheque, this information must be recorded on the envelope and the worker must acknowledge receipt of payment by signing for it
- (g) If a worker's employment is terminated, the employer must pay all monies owing to that worker within one month of the termination of employment.

C3.1.7.17 Deductions

- (a) An employer may not deduct money from a worker's payment unless the deduction is required in terms of a law.
- (b) An employer must deduct and pay to the SA Revenue Services any income tax that the worker is required to pay.
- (c) An employer who deducts money from a worker's pay for payment to another person must pay the money to that person within the time period and other requirements specified in the agreement law, court order or arbitration award concerned.
- (d) An employer may not require or allow a worker to –
 - i. repay any payment except an overpayment previously made by the employer by mistake;
 - ii. state that the worker received a greater amount of money than the employer actually paid to the worker; or
 - iii. pay the employer or any other person for having been employed.

C3.1.7.18 Health and Safety

- (a) Employers must take all reasonable steps to ensure that the working environment is healthy and safe.
- (b) A worker must –
 - i. work in a way that does not endanger his/her health and safety or that of any other person;
 - ii. obey any health and safety instruction;
 - iii. obey all health and safety rules of the SPWP;
 - iv. use any personal protective equipment or clothing issued by the employer;
 - v. report any accident, near-miss incident or dangerous behaviour by another person to their employer or manager

C3.1.7.19 Compensation for Injuries and Diseases

- (a) It is the responsibility of the employers (other than a contractor) to arrange for all persons employed on a SPWP to be covered in terms of the Compensation for Occupational Injuries and Diseases Act, 130 of 1993.
- (b) A worker must report any work-related injury or occupational disease to their employer or manager.
- (c) The employer must report the accident or disease to the Compensation Commissioner.

(d) An employer must pay a worker who is unable to work because of an injury caused by an accident at work 75% of their earnings for up to three months. The employer will be refunded this amount by the Compensation Commissioner. This does NOT apply to injuries caused by accidents outside the workplace such as road accidents or accidents at home.

C3.1.7.20 Termination

- (a) The employer may terminate the employment of a worker for good cause after following a fair procedure.
- (b) A worker will not receive severance pay on termination.
- (c) A worker is not required to give notice to terminate employment. However, a worker who wishes to resign should advise the employer in advance to allow the employer to find a replacement.
- (d) A worker who is absent for more than three consecutive days without informing the employer of an intention to return to work will have terminated the contract. However, the worker may be re-engaged if a position becomes available for the balance of the 24-month period.
- (e) A worker who does not attend required training events, without good reason, will have terminated the contract. However, the worker may be re-engaged if a position becomes available for the balance of the 24-month period.

C3.1.7.21 Certificate of Service

On termination of employment, a worker is entitled to a certificate stating –

- (a) the worker's full name;
- (b) the name and address of the employer;
- (c) the SPWP on which the worker worked;
- (d) the work performed by the worker;
- (e) any training received by the worker as part of the SPWP;
- (f) the period for which the worker worked on the SPWP;
- (g) any other information agreed on by the employer and worker.

C3.1.7.22 Contractor's default in payment to Labourers and Employees

- (a) Any dispute between the Contractor and labourers, regarding delayed payment or default in payment of fair wages, if not resolved immediately may compel the Employer to intervene.
- (b) The Employer may, upon the Contractor defaulting payment, pay the moneys due to the workers not honoured in time, out of any moneys due or which may become due to the Contractor under the Contract.

C3.1.7.23 Provision of Handtools

- (a) The Contractor shall provide his labour force with hand tools of adequate quality, sufficient in numbers and make the necessary provisions to maintain the tools in good and safe working conditions

C3.1.7.23 Reporting

The Contractor shall submit monthly returns/reports as specified below:

- (a) Signed Muster rolls/pay sheets of temporary workers and permanent staff detailing the number, category, gender, rate of pay and daily attendance.
- (b) Copies of identity documents of workers
- (c) Number of persons who have attended training including nature and duration of training provided
- (d) Assets created, rehabilitated or maintained in accordance with indicators in the EPWP M&E framework
- (e) Plant utilization returns
- (f) Progress report detailing production output compared to the programme of works

C3.2 ENGINEERING

C3.2.1 Design

- (a) The **Employer** is responsible for the design of the permanent Works as reflected in these Contract Documents unless otherwise stated.
- (b) The **Contractor** is responsible for the design of the temporary Works and their compatibility with the permanent Works.
- (c) The **Contractor** shall supply all details necessary to assist the employer (the Technical Services department) in the compilation of the as-built drawings.

C3.2.2 Employer's Design

- (a) Detail description of Works
- (b) General Works

C3.2.3 Contractor's Design

Where contractor is to supply the design of designated parts of the permanent Works or temporary Works he shall supply full working drawings supported by a professional engineer's design certificate.

C3.2.4 Design procedures

All designs and modifications thereto shall be communicated in writing and the contractor and engineer shall maintain master lists to record and track all transactions.

C3.3 CONSTRUCTION

C3.3.1 STANDARD SPECIFICATIONS

- (a) The following specifications shall apply for the construction of the Works.
 - (i) The COLTO Standard Specifications for Road and Bridge Works for State Road Authorities (1998).
The contractor may purchase copies of Volume (i) from the South African Institution of Civil Engineers.
SAICE Tel: (011) 805-5947
Waterfall Park / Postnet Suite 81 Fax: (011) 805-5971
Howick Gardens / Private Bag X65
Vorna Valley / Halfwayhouse Contact Person: Angeline Aylward Becker Street /
1685
Midrand

(b) SANS or BS Specifications and Codes of Practice

Wherever any reference is made to the South African Bureau of Standards (SANS) and the British Standards Specification (BSS) in either these Bill of Quantities or the Specification of Materials and Methods to be Used (OOG-001E), this reference shall be deemed to read "SABS or equivalent standard" and BS or equivalent standard" respectively.

(c) Various other specifications specified in the COLTO Standard Specifications or the Project Specifications.

(d) Latest **Sabita Manual**, Manual 25 entitled "*Quality Management in the Handling and Transport of Bituminous Binders*".

C3.3.2 PROJECT SPECIFICATIONS RELATING TO STANDARD SPECIFICATIONS

C3.3.2.1 General Conditions of Contract Referred to in the Standard Specifications

The references to the General Conditions of Contract appearing in the COLTO Standard Specifications refer to the COLTO General Conditions of Contract which is superseded in this contract by the General Conditions of Contract for Construction Works 2010. The corresponding clause in the latter document pertaining to the reference in the COLTO Standard Specifications is listed in the table below.

Clause No. in the Standard Specifications	Clause No. in COLTO General Conditions	Equivalent Clause No. in General Conditions of Contract 2010
1202	15	5.6.1
1206	14	Deleted
1209	52	6.10.2
1210	54	51.1
1212(1)	49	6.10.1
1215	45	5.12.1
1217	35	8.2.1
1303	49	6.8
1303	53	6.11
1303	12	5.6
1303	45	5.12.1
1403	40(1)	6.4.1
1505	40	6.4
31.03	40	6.4
3204(b)	40	6.4
3303(b)	2	3
5803(c)	40	6.4
5805(d)	40	6.4
6103(c)	40	6.4
Item 83.03	22	5.15
ALL SECTIONS	48	6.6

C3.3.2.2 Amendments to the Standard Specifications

There are no amendments to the Standard Specifications as issued by the Committee of Land Transport Officials (COLTO).

C3.3.2.3 Project Specifications Relating to Standard Specifications

This part of the project specifications deals with matters relating to the standard specifications. Where reference is made in the standard specifications to the project specifications this part shall also contain the relevant information e.g. the requirements where a choice of materials or construction methods are provided for the standard specifications.

In certain clauses the standard specifications allow a choice to be specified in the project specifications between alternative materials or methods of construction and for additional requirements to be specified to suit a particular contract. Details of such alternatives or additional requirements applicable to this contract are contained in this part of the project specifications. It also contains some additional specifications and amendments of the standard specifications required for this particular contract.

The number of each clause and each payment item in this part of the project specifications consists of the prefix B followed by a number corresponding to the number of the relevant clause or payment item in the standard specifications. The number of a new clause or a new payment item, which does not form part of a clause or a payment item in the standard specifications and is included here, is also prefixed by B followed by a new number. The new numbers follow on the last clause or item number used in the relevant section of the standard specifications.

Clauses and pay items referring to labour intensive methods are prefixed by L in the project specifications.

Clauses and pay items referring to emerging contractors are prefixed by E in the project specifications.

1200 : GENERAL REQUIREMENTS AND PROVISIONS

B1204 PROGRAMME OF WORK

(a) General requirements

Amend the word “network” in the fourth line of the first paragraph to read as “bar (Gantt) chart”.

Add the following after the third paragraph:

“The bar-chart programme to be provided by the contractor shall show the various activities in such detail as may be required by the engineer. Progress in terms of the programme shall be updated monthly by the contractor in accordance with the progress made by the contractor.

In compiling the programme of work, the contractor shall indicate and make due allowance for the following, as specified elsewhere in the contract documents:

B1205 WORKMANSHIP AND QUALITY CONTROL

Add the following to the third paragraph:

"The engineer shall, however, undertake acceptance control tests for the judgement of workmanship and quality, without accepting any obligations vested with the contractor in terms of the contract with specific reference to quality of materials and workmanship. Such acceptance control test done by the engineer shall not relieve the contractor of his obligations to maintaining his own quality control system."

Add the following at the end of this clause:

"The engineer shall, for the purpose of acceptance control on products and workmanship, assess test results and measurements in accordance with the provisions of section 8300 of the standard specifications. Where small quantities of work are involved, a lot shall mean a full day's production for a specific item of work subject to acceptance control testing."

B1229 SABS CEMENT SPECIFICATIONS

Replace the last paragraph of this clause with the following:

"Where reference is made in this specification or the standard specifications to the cement specifications, e.g. SABS 471: Portland cement and rapid hardening Portland cement, it shall be replaced with the new specification:

SABS ENV 197-1: Cement-composition, specifications and conformity criteria.

Part 1: Common cements.

Furthermore, where reference is made in this specification or the standard specifications to the different cement types, the following new names/types shall apply:

TYPICAL NEW PRODUCT NOMENCLATURE	
Cement type	Cement strength class
CEM I	32,5
CEM I	32,5R
CEM I	42,5
CEM I	42,5R
No provision made	No provision made
CEM II/A-S	32,5
CEM II/A-S	32,5R
CEM II/A-S	42,5
CEM II/A-V	32,5
CEM II/A-V	32,5R
CEM II/A-W	32,5
CEM II/A-W	32,5R
CEM II/A-V	42,5
CEM II/A-V	42,5R
CEM II/A-W	42,5

CEM II/A-W	42,5R
CEM III/A CEM III/A	32,5 32,5R
CEM II/B-V CEM II/B-W	32,5 32,5
CEM II/B-S CEM II/B-S	32,5R 42,5
CEM III/A CEM III/A	32,5R 42,5

CEM I 32,5, CEM II A-S 32,5, CEM II/A-V 32,5, or CEM III A may be used for the manufacture of reinforced concrete members.”

Add the following new clauses:

B1231 COMMUNITY LIAISON OFFICER (CLO)

The contractor or his appointed agent will appoint a Community Liaison Officer (CLO) after consultation with the local communities, the engineer and the employer. The contractor shall direct all his liaison efforts with the local communities through the appointed officer. The contractor shall, however, accept the appointed as part of his management personnel.

(a) Duties of the Community Liaison Officer

The Community Liaison Officer’s duties will be:

- (i) To be available on site daily between the hours of _____(insert time) and _____ (insert time) and at other times as the need arises. His/Her normal working day will extend from _____ (insert time) in the morning until _____ (insert time) in the afternoon.
- (ii) To determine, in consultation with the contractor, the needs of the temporary labour for relevant skills training. S/He will be responsible for the identification of suitable trainees and will attend one of each of the training sessions.
- (iii) To communicate daily with the contractor and the engineer to determine the labour requirements with regard to numbers and skill, to facilitate in labour disputes and to assist in their resolution.
- (iv) To assist in and facilitate in the recruitment of suitable temporary labour and the establishment of a “labour desk”.
- (v) To attend all meetings in which the community and/or labour are present or are required to be represented.
- (vi) To assist in the identification, and screening of labourers from the community in accordance with the contractor’s requirements.
- (vii) To inform temporary labour of their conditions of temporary employment and to inform temporary labourers as early as possible when their period of employment will be terminated.
- (viii) To attend disciplinary proceedings to ensure that hearings are fair and reasonable.
- (ix) To keep a daily written record of his interviews and community liaison.

- (x) To attend monthly site meetings to report on labour and RDP matters.
- (xi) All such other duties as agreed upon between all parties concerned.
- (xii) To submit monthly returns regarding community liaison as illustrated in Part C5.1 of this document (form RDP 12(E))

(b) Payment for the community liaison officer

A special pay item is incorporated in section 1200 of the bill of quantities relating to payment of the liaison officer on a prime cost sum basis. This payment shall only be made for the period for which the duties of the liaison officer are required. The remuneration of the CLO shall be determined by the Employer in terms of the Sectorial determination 2: Civil Engineering Sector (Task grade 3).

(c) Period of employment of the community liaison officer

The period of employment of the community liaison officer shall be as decided upon jointly by the contractor and employer at a maximum period of a six months basis, but with the option of renewal.

B1233 WORKMEN'S COMPENSATION ACT

All labour employed on the site shall be covered by the Compensation for Occupational Injuries and Deceases Act (COIDA). The contractor shall pay in full, including the payment of the necessary levies, such amounts, as are due in terms of the Act. The contractor at the commencement of the contract shall resolve the manner in which Workmen's Compensation will be handled. Amounts paid by the contractor shall not be included in the wage rates but shall be covered by the Contractor to be deemed as included in his General Obligations rates in Section 1300 of the Bill of Quantities.

Add the following clause:

B12.04 Provision for a Community Liaison Officer

a) Provisional sum for the payment of the Community Liaison Officer Provisional Sum

Expenditure of the above item shall be made in accordance with the general conditions of contract.

The tendered percentage is a percentage of the amount actually spent under the sub-item B12.04 (a), which shall include full compensation for the handling costs of the contractor, and the profit in connection with providing the community liaison officer."

1300: CONTRACTOR'S ESTABLISHMENT ON SITE AND GENERAL OBLIGATIONS

1500: ACCOMMODATION OF TRAFFIC

B1503 TEMPORARY TRAFFIC CONTROL FACILITIES

Add the following after the first paragraph:

"All temporary road signs, devices, sequences, layouts and spacing shall comply with the requirements of the Road Traffic Act, 1996 (Act 93 of 1996), the National Road Traffic Regulations, 2000, the South African Road Traffic Signs

Manual, the requirements of the relevant road authority and the drawings. All temporary traffic control facilities shall comply with the guidelines set in SA Road Traffic Signs Manual, Volume 2, Chapter 13: Roadworks Signing, (SARTSM, June 1999, obtainable from the Government Printer, Pretoria).”

(b) Road signs and barricades

Add the following:

“All the temporary road signs are to be mounted on posts as specified in section 5600 of the specifications. Provision shall be made for the supply and erection of the signs and the maintenance of the signs during the construction period. Provisions shall also be made for the removal of the temporary road signs on completion of the construction work when such signs are no longer required.

Temporary road signs and channelization devices shall be manufactured in accordance with the latest edition of the South African Road Traffic Signs Manual (June 1999) and placed as shown on the drawings and in Road Signs Note 13. Delineators shall be manufactured from a non-metal material and shall be mounted on a base section also manufactured of non-metal material. Single as well as back-to-back mounted delineators are required.

The obligation to arrange safe passage of traffic shall always be vested with the contractor regardless what is indicated on the drawings of the engineer.”

(c) Channelization devices and barricades

Add the following:

“Drums shall not be used as channelization devices.

TW 401 and TW 402 delineators shall comply with the following requirements:

- a) It shall be manufactured from a flexible material and shall comply with SABS 1555. The blade portion of the delineator shall be positively affixed to a base unit which in turn shall be stable on its own or be stabilized by means of sandbags when used on the road.
- ii) The blade shall be retro-reflectorised, with class 1 yellow sheeting on the side facing oncoming traffic..
- iii) It shall nominally be 1000mm high x 250mm wide and the bottom edge of the delineator shall not be more than 200mm above the road surface.
- iv) It shall be subject to the approval of the Engineer.

6400: CONCRETE FOR STRUCTURES

B6402 MATERIALS

(a) Cement

Replace this sub-section with the following:

“Refer to section 1142 for specification of cement.”

CEM I 32,5, CEM II A-S 32,5, CEM II/A-V 32,5, or CEM III A may be used for the manufacture of reinforced concrete members.

B6404 CONCRETE QUALITY

(b) Strength concrete

Add the following paragraph:

"The cement content for any class of structural concrete or mass concrete used in structures shall not be less than 300kg/m³ of concrete.

The contractor must provide the engineer with complete mix designs and materials for strength concrete at least six (6) weeks before the first concrete is cast on the project".

B6405 MEASURING THE MATERIALS

(c) Aggregates

Add the following:

"All concrete for structures shall be manufactured by mechanical mass batching unless authorised otherwise by the engineer for minor concrete structures or for labour-intensive methods."

B6407 PLACING AND COMPACTING

(a) General

Add the following after the third paragraph:

"Concrete shall only be placed up to 20:00 at the latest. Under exceptional circumstances the Engineer may allow night work on condition that proper lighting arrangements can be made and a new and rested shift for night work is provided and ambient temperatures are such as to not adversely affect the setting of the concrete."

C3.3.3 PROJECT SPECIFICATIONS: ADDITIONAL SPECIFICATIONS

CONTENTS

C3.3.3.1 REQUIREMENTS OF THE OCCUPATIONAL HEALTH AND SAFETY ACT REGULATIONS

C3.3.3.2 PROVISION OF THE TEMPORARY WORKFORCE

C3.3.3.1 OCCUPATIONAL HEALTH AND SAFETY ACT 1993 : HEALTH AND SAFETY SPECIFICATION

CONTENTS

C3.3.3.1.1 INTRODUCTION

C3.3.3.1.2 SCOPE

C3.3.3.1.3 GENERAL OCCUPATIONAL HEALTH AND SAFETY PROVISIONS

C3.3.3.1.4 OPERATIONAL CONTROL

C3.3.3.1.1 Introduction

In terms of the Construction Regulation 4(1) (a) of the Occupational Health and Safety Act, No. 85 of 1993, Blouberg Local Municipality, as the Client, is required to compile a Health & Safety Specification for any intended project and provide such specification to any prospective tenderer.

The Client's further duties are as in C3.5.1.3.1.1. below and in the Construction Regulations, 2003.

This specification has as objective to ensure that Principal Contractors entering into a Contract with the Blouberg Local Municipality achieve an acceptable level of OH&S performance. This document forms an integral part of the Contract and Principal and other Contractors should make it part of any Contracts that they may have with Contractors and/or Suppliers.

Compliance with this document does not absolve the Principal Contractor from complying with minimum legal requirements and the Principal Contractor remains responsible for the health & safety of his employees and those of his Mandataries.

C3.3.3.1.2 Scope

Development of a health & safety specification that addresses all aspects of occupational health and safety as affected by the abovementioned contract work.

The specification will provide the requirements that Principal Contractors and other Contractors will have to comply with in order to reduce the risks associated with the abovementioned contract work that may lead to incidents causing injury and/or ill health, to a level as low as reasonably practicable.

C3.3.3.1.3 General Occupational Health & Safety Provisions

(a) Hazard Identification & Risk Assessment (Construction Regulation 7)

(i) Risk Assessments

Annexure 3 contains a list of Risk Assessment headings that have been identified by Blouberg Local Municipality as possibly applicable to the abovementioned contract work. It is, by no means, exhaustive and is offered as an assistance to Contractors intending to tender.

Based on the Risk Assessments, the Principal Contractor must develop a set of site-specific OH&S rules that will be applied to regulate the OH&S aspects of the construction.

The Risk Assessments, together with the site-specific OH&S rules must be submitted to the Blouberg Local Municipality before mobilisation on site commences.

Despite the Risk Assessments listed in Annexure 3, the Principal Contractor is required to conduct a baseline Risk Assessment and the aforesaid listed Risk Assessments must be incorporated into the base-line Risk Assessment. The baseline Risk Assessment must further include the Standard Working procedures (SWP) and the applicable Method Statements based on the Risk Assessments

All out-of-scope work must be associated with a Risk Assessment.

(ii) Review of Risk Assessments

The Principal Contractor is to review the Hazard Identification, Risk Assessments and SWP's at each Production Planning and Progress Report meeting as the Contract work develops and progresses and each time changes are made to the designs, plans and construction methods and processes.

The Principal Contractor must provide the Client, other Contractors and all other concerned-parties with copies of any changes, alterations or amendments as contemplated in above.

(c) Legal Requirements

All Contractors entering into a Contract with the Blouberg Local Municipality shall, as a minimum, comply with the

- Occupational Health & Safety Act and Regulations (Act 85 of 1993). A current, up-to-date copy of the OHS Act must be available on site at all times
- Compensation for Occupational Injuries & Diseases Act (Act 130 of 1993). The principal Contractor will be required to submit a letter of Registration and "good-standing" from the Compensation Insurer before being awarded the Contract. A current, up-to-date copy of the COID Act must be available on site at all times.
- Where work is being carried out on mines' premises the Contractor will have to comply with the Mine Health & Safety Act and Regulations (Act. 29 of 19960 and any other OH&S requirements that the mine may specify. A current, up-to-date copy of the OHS Act must be available on site at all times.

(d) Structure and Responsibilities

(i) Overall Supervision and Responsibility for OH&S

* It is a requirement that the Principal Contractor, when he appoints Contractors (Sub-contractors) in terms of Construction Regulations 5(3), (5), (9), (10) and (12) he includes an OHS Act Section 37(2) agreement: "Agreement with Mandatary" in his agreement with such Contractors.

* Any OH&S Act (85/1993), Section 16(2) appointee/s as detailed in his/her/their respective appointment forms

(ii) Further (Specific) Supervision Responsibilities for OH&S

The Contractor shall appoint designated competent employees and/or other competent persons as required by the Act and Regulations. Below is a list of identified appointments and may be used to select the appropriate appointments for the current contract:

	Ref. Section/Regulation in OHSAct
Batch Plant Supervisor	(Construction Regulation 6(1))
Construction Vehicles/Mobile Plant/Machinery Supervisor	(Construction Regulation 21)
Demolition Supervisor	(Construction Regulation 12)
Drivers/Operators of Construction Vehicles/Plant	(Construction Regulation 21)
Electrical Installation and Appliances Inspector	(Construction Regulation 22)
Emergency/Security/Fire Coordinator	(Construction Regulation 27)
Excavation Supervisor	(Construction Regulation 11)

Explosive Powered Tool Supervisor	(Construction Regulation 19)
Fall Protection Supervisor	(Construction Regulation 8)
First Aider	(General Safety Regulation 3)
Fire Equipment Inspector	(Construction Regulation 27)
Formwork & Support work Supervisor	(Construction Regulation 10)
Hazardous Chemical Substances Supervisor	(HCS Regulations)
Incident Investigator	(General Admin Regulation 29)
Ladder Inspector	(General Safety Regulation
13A)	
Lifting Equipment Inspector	(Construction Regulation 20)
Materials Hoist Inspector	(Construction Regulation 17)
OH&S Committee	(OHS Act Section 19)
OH&S Officer	(Construction Regulation 6(6)
OH&S Representatives	(OHS Act Section 17)
Person Responsible for Machinery	(General Machinery Regulation
2)	
Scaffolding Supervisor	(Construction Regulation 14)
Stacking & Storage Supervisor	(Construction Regulation 26)
Structures Supervisor	(Construction Regulation 9)
Suspended Platform Supervisor	(Construction Regulation 15)
Tunneling Supervisor	(Construction Regulation 13)
Vessels under Pressure Supervisor	(Vessels under Pressure
Regulations)	
Working on/next to Water Supervisor	(Construction Regulation 24)
Welding Supervisor	(General Safety Regulation 9)

The appointments must be in writing and the responsibilities clearly stated together with the period for which the appointment is made. This information must be communicated and agreed with the appointees.

Copies of appointments must be submitted to the Blouberg Local Municipality together with concise CV's of the appointees. All appointments must be officially approved by Blouberg Local Municipality. Any changes in appointees or appointments must be communicated to Blouberg Local Municipality forthwith.

The Principal Contractor must, furthermore, provide Blouberg Local Municipality with an organogram of all Contractors that he/she has appointed or intends to appoint and keep this list updated on a weekly basis. In addition Blouberg Local Municipality may require that a Traffic Safety Officer be appointed for any project.

(iii) Designation of OH&S Representatives (Section 18 of the OHS Act)

OH&S Representatives have to be designated in writing and the designation must include the area of responsibility of the person and term of the designation.

(iii) Duties and Functions of the OH&S Representatives (Section 19 of the OHS Act)

The Principal Contractor must ensure that the designated OH&S Representatives conduct a minimum monthly inspection of their respective areas of responsibility using a checklist and report thereon to the Principal Contractor

OH&S representatives must be included in accident/incident investigations
OH&S representatives must attend all OH&S committee meetings.

(iv) Appointment of OH&S Committee (Section 20 of the OHS Act)

The Principal Contractor must establish an OH&S Committee consisting of all the designated OH&S Representatives together with a number of management representatives that are not allowed to exceed the number of OH&S representatives on the committee and a representative of the Client who shall act as the chairman without a vote. The members of the OH&S committee must be appointed in writing.

The OH&S Committee must meet minimum monthly and consider, at least, the following Agenda:

1. Opening & Welcome
2. Present/Apologies/Absent
3. Minutes of previous Meeting
4. Matters Arising from the previous Minutes
5. OH&S Reps Reports
6. Incident Reports & Investigations
7. Incident/Injury Statistics
8. Other Matters
9. Endorsement of Registers and other statutory documents by a representative of the Principal Contractor
10. Close/Next Meeting

(d) Administrative Controls and the Occupational Health & Safety File

- (i) The OH&S File (Construction Regulation 5 (7))

As required by Construction Regulation 5(7), the Principal Contractor and other Contractors will each keep an OH&S File on site containing the following documents as a minimum:

- * Notification of Construction Work (Construction Regulation 3.)
- * Copy of OH&S Act (updated) (General Administrative Regulation 4.)
- * Proof of Registration and good standing with a COID Insurer (Construction Regulation 4 (g))
- * OH&S Programme agreed with the Client including the underpinning Risk Assessment/s & Method Statements (Construction regulation 5 (1))
- * Copies of OH&S Committee and other relevant Minutes
- * Designs/drawings (Construction Regulation 5 (8))
- * A list of Contractors (Sub-Contractors) including copies of the agreements between the parties and the type of work being done by each Contractor (Construction Regulation 9)
- * Appointment/Designation forms as per (a)(i) & (ii) above.
- * Registers as follows:

- * Accident/Incident Register (Annexure 1 of the General Administrative Regulations)
- * OH&S Representatives Inspection Register
- * Asbestos Demolition & Stripping Register
- * Batch Plant Inspections
- * Construction Vehicles & Mobile Plant Inspections by Controller
- * Daily Inspection of Vehicles, Plant and other Equipment by the Operator/ Driver/User
- * Demolition Inspection Register
- * Designer's Inspection of Structures Record
- * Electrical Installations, -Equipment & -Appliances (including Portable Electrical Tools)
- * Excavations Inspection
- * Explosive Powered Tool Inspection, Maintenance, Issue & Returns Register (incl. cartridges & nails)
- * Fall Protection Inspection Register
- * First Aid Box Contents
- * Fire Equipment Inspection & Maintenance
- * Formwork & Support work Inspections
- * Hazardous Chemical Substances Record
- * Ladder Inspections
- * Lifting Equipment Register
- * Materials Hoist Inspection Register
- * Machinery Safety Inspection Register (incl. machine guards, lock-outs etc.)
- * Scaffolding Inspections
- * Stacking & Storage Inspection
- * Inspection of Structures
- * Inspection of Suspended Platforms
- * Inspection of Tunnelling Operations
- * Inspection of Vessels under Pressure
- * Welding Equipment Inspections
- * Inspection of Work conducted on or Near Water
- * All other applicable records

Blouberg Local Municipality will conduct an audit on the OH&S file of the Principal Contractor from time-to-time.

(e) OH&S Goals & Objectives & Arrangements for Monitoring & Review of OH&S Performance

The Principal Contractor is required to maintain a CIFR of at least 8 (See Annexure 1. to this document: "Measuring Injury Experience) and report on this to Blouberg Local Municipality on a monthly basis

(f) Notification of Construction Work (Construction Regulation 3.)

The Principal Contractor must, where the Contract meets the requirements laid down in Construction Regulation 3, within 5 working days, notify the Department of Labour of the intention to carry out construction work and use the form (Annexure A in the Construction Regulations) for the purpose. A

copy must be held on the OH&S File and a copy must be forwarded to Blouberg Local Municipality for record keeping purposes.

(g) Training, Awareness and Competence

The contents and syllabi of all training required by the Act and Regulations are to be included in the Principal Contractor's OH&S Plan.

(i) General Induction Training

All members of Contractor's Site management as well as all the persons appointed as responsible for OH&S in terms of the Construction and other Regulations will be required to attend a general induction session by the Client

All employees of the Principal and other Contractors to be in possession of proof of General Induction training.

(ii) Site Specific Induction Training

The Principal Contractor will be required to develop Contract work project specific induction training based on the Risk Assessments for the Contract work and train all employees and other Contractors and their employees in this.

All employees of the Principal and other Contractors to be in possession of proof of Site Specific OH&S Induction training at all times.

(iii) Other Training

All operators, drivers and users of construction vehicles, mobile plant and other equipment to be in possession of valid proof of training.

All employees in jobs requiring training in terms of the Act and Regulations to be in possession of valid proof of training as follows:

OH&S Training Requirements: (as required by the Construction Regulations and as indicated by the OH&S Specification & the Risk Assessment/s):

- * General Induction (Section 8 of the Act)
- * Site/Job Specific Induction (also visitors) (Sections 8 & 9 of the Act)
- * Site/Project Manager
- * Construction Supervisor
- * OH&S Representatives (Section 18 (3) of the Act)
- * Training of the Appointees indicated above
- * Operators & Drivers of Construction Vehicles & Mobile Plant (Construction Regulation 21)
- * Basic Fire Prevention & Protection (Environmental Regulations 9 and Construction regulation 27)
- * Basic First Aid (General Safety Regulations 3)
- * Storekeeping Methods & Safe Stacking (Construction Regulation 26)

* Emergency, Security and Fire Co-coordinator

(iv) Awareness & Promotion

The Principal Contractor is required to have a promotion and awareness scheme in place to create an OH&S culture in employees. The following are some of the methods that may be used:

- Toolbox Talks
 - OH&S Posters
 - Videos
 - Competitions
- Suggestion schemes
Participative activities such as OH&S Safety circles.

(v) Competence

The Principal Contractor shall ensure that his and other Contractors personnel appointed are competent and that all training required to do the work safely and without risk to health, has been completed before work commences

The Principal Contractor shall ensure that follow-up and refresher training is conducted as the contract work progresses and the work situation changes.

Records of all training must be kept on the OH&S File for auditing purposes.

(h) Consultation, Communication and Liaison

OH&S Liaison between the Client, the principal Contractor, the other Contractors, the Designer and other concerned parties will be through the OH&S committee as contemplated in above.

In addition to the above, communication may be directly to the Client or his appointed Agent, verbally or in writing, as and when the need arises.

Consultation with the workforce on OH&S matters will be through their Supervisors, OH&S Representatives, the OH&S committee and their elected Trade Union Representatives, if any.

The Principal Contractor will be responsible for the dissemination of all relevant OH&S information to the other Contractors e.g. design changes agreed with the Client and the Designer, instructions by the Client and/or his/her agent, exchange of information between Contractors, the reporting of hazardous/dangerous conditions/ situations etc.

The Principal Contractor will be required to do Site Safety Walks with Blouberg Local Municipality at least on a basis to be determined between the two parties.

The Principal and other Contractors will be required to conduct Toolbox Talks with their employees on a weekly basis and records of these must be kept on the OH&S File. Employees must acknowledge the receipt of Toolbox Talks which record must, likewise be kept on the OH&S File.

The Principal Contractors most senior manager on site will be required to attend all Blouberg Local Municipality OH&S meetings and a list of dates, times and venues will be provided to the Principal Contractor by Blouberg Local Municipality.

(i) Checking, Reporting and Corrective Actions

(i) Monthly Audit by Client (Construction Regulation 1(d))

Blouberg Local Municipality will be conducting a Monthly Audit to comply with Construction Regulation 4(1)(d) to ensure that the principal Contractor has implemented and is maintaining the agreed and approved OH&S Plan.

(ii) Other Audits and Inspections by Blouberg Local Municipality:

Blouberg Local Municipality reserves the right to conduct other ad hoc audits and inspections as deemed necessary. This will include Site Safety Walks.

(iii) Conducting an Audit

A representative of the Principal Contractor must accompany Blouberg Local Municipality on all Audits and Inspections and may conduct his/her own audit/inspection at the same time. Each party will, however, take responsibility for the results of his/her own audit/inspection results.

(iv) Contractor's Audits and Inspections

The Principal Contractor is to conduct his own monthly internal audits to verify compliance with his own OH&S Management system as well as of with this specification.

(v) Inspections by OH&S Representative's and other Appointees

OH&S Representatives must conduct weekly inspections of their areas of responsibility and report thereon to their foreman or supervisor whilst other appointees must conduct inspections and report thereon as specified in their appointments e.g. vehicle, plant and machinery drivers, operators and users must conduct daily inspections before start-up.

(vi) Recording and Review of Inspection Results

All the results of the abovementioned inspections to be in writing, reviewed at OH&S committee meetings, endorsed by the chairman of the meeting and placed on the OH&S File.

(vii) Reporting of Inspection Results

The Principal Contractor is required to provide the Client with a monthly report in the format as per the attached Annexure 2: "SHE Risk Management Report"

(j) Incident Reporting and Investigation

Reporting of Accidents and Incidents (Section 24 and General Administrative Regulation 8 of the OHS Act)

The Principal Contractor must report all incidents where an employee is injured on duty to the extent that he/she:

- * dies

- * becomes unconscious

- * loses a limb or part of a limb

- * is injured or becomes ill to such a degree that he/she is likely either to die or to suffer a permanent physical defect or likely to be unable for a period of at least 14 days either to work or continue with the activity for which he/she was usually employed

OR where:

- * a major incident occurred

- * the health or safety of any person was endangered

- * where a dangerous substance was spilled

- * the uncontrolled release of any substance under pressure took place

- * machinery or any part of machinery fractured or failed resulting in flying, falling or uncontrolled moving objects

- * machinery ran out of control

to Blouberg Local Municipality within two days and to the Provincial Director of the Department of Labour within seven days (Section 24 of the Act & General Administrative Regulation 8.) EXCEPT that, where a person has died, has become unconscious for any reason or has lost a limb or part of a limb or may die or suffer a permanent physical defect, the incident must be reported to both Blouberg Local Municipality and the Provincial Director of the Department of Labour forthwith by telephone, telefax or E-mail.

The Principal Contractor is required to provide Blouberg Local Municipality with copies of all statutory reports required in terms of the Act within 7 days of the incident occurring.

The Principal Contractor is required to provide Blouberg Local Municipality with copies of all internal and external accident/incident investigation reports including the reports contemplated below within 7 days of the incident occurring.

Accident and Incident Investigation (General Administrative Regulation 9)

The Principal Contractor is responsible for the investigation of all accidents/incidents where employees and non-employees were injured to the extent that he/she/they had to be referred for medical treatment by a doctor, hospital or clinic

The results of the investigation to be entered into the Accident/Incident Register listed in above.

The Principal Contractor is responsible for the investigation of all minor and non-injury incidents as described in Section 24 (1) (b) & (c) of the Act and keeping a record of the results of such investigations including the steps taken to prevent similar accidents in future.

The Principal Contractor is responsible for the investigation of all road traffic accidents and keeping a record of the results of such investigations including the steps taken to prevent similar accidents in future.

The Blouberg Local Municipality reserves the right to hold its own investigation into an incident or call for an independent external investigation.

C.3.3.3.1.4 Operational Control

(a) Emergency Preparedness, Contingency Planning and Response

The Principal Contractor must appoint a competent person to act as Emergency Controller/Coordinator.

The Principal Contractor must conduct an emergency identification exercise and establish what emergencies could possibly develop. He/she must then develop detailed contingency plans and emergency procedures, taking into account any emergency plan that Blouberg Local Municipality may have in place.

The Principal Contractor and the other Contractors must hold regular practice drills of contingency plans and emergency procedures to test them and familiarise employees with them.

(b) First Aid (General Safety Regulation 3)

The Principal Contractor must provide First Aid equipment (including a stretcher) and have qualified First Aider/s as required by General Safety Regulation 3 of the OHS Act.

The Contingency Plan of the Principal Contractor must include the arrangements for speedily and timeously transporting injured/ill person/s to a medical facility or of getting emergency medical aid to person/s that may require it.

The Principal Contractor must have firm arrangements with his other Contractors in place regarding the responsibility of the other Contractors injured/ill employees

(c) Security

The Principal Contractor must establish site access rules and implement and maintain these throughout the construction period. Access control must include the rule that non-employees will not be allowed on site unaccompanied.

The Principal Contractor must develop a set of Security rules and procedures and maintain these throughout the construction period

(d) Fall Protection (Working in Elevated Positions (Construction regulation 8.)

A pre-emptive Risk Assessment will be required for any work to be carried out above two metres from the ground or any floor level and will be classified as "Work in Elevated Positions".

As far as is practicable, any person working in an elevated position will work from a platform, ladder or other device that is at least as safe as if he/she is working at ground level and whilst working in this position be wearing a single belt with lanyard that will be worn to prevent the person falling from the platform, ladder or other device utilised. This safety belt will be, as far as is possible, secured to a point away from the edge over which the person might fall and the lanyard must be of such a length that the person will not be able to move over the edge.

Alternatively any platform, slab, deck or surface forming an edge over which a person may fall may be fitted with guard rails at two different heights as prescribed in SABS 085: Code of Practice for the Design, Erection, Use and Inspection of Access Scaffolding.

Where the requirement in is not practicable, the person will be provided with a full body harness that will be worn and attached above the wearer's head at all times and the lanyard must be fitted with a shock absorbing device OR the person must be attached to an approved, by Blouberg Local Municipality, fall arrest system.

Where the requirements are not practicable, a suitable catch net must be erected.

Workers working in elevated positions must be trained to do this safely and without risk to health

Where work on roofs is carried out, the Risk Assessment must take into account the possibility of persons falling through fragile material. Skylights and openings in the roof.

C3.3.3.4 PROVISION OF THE TEMPORARY WORKFORCE

CONTENTS

C3.3.3.4.1 SCOPE

C3.3.3.4.2 INTERPRETATIONS

C3.3.3.4.3 PERMITTED SOURCES OF TEMPORARY WORKERS

C3.3.3.4.4 EMPLOYMENT RECORDS TO BE PROVIDED

C3.3.3.4.5 VARIATIONS IN WORKER PRODUCTION RATES

C3.3.3.4.6 RECRUITMENT AND SELECTION PROCEDURES

C3.3.3.4.7 TERMS AND CONDITIONS PERTAINING TO THE EMPLOYMENT OF THE TEMPORARY WORKFORCE

C3.3.3.4.8 LABOUR RELATIONS AND WORKER GRIEVANCE PROCEDURES

C3.3.3.4.9 THE SUBCONTRACTORS' WORKFORCES

C3.3.3.4.10 MEASUREMENT AND PAYMENT

C3.3.3.4.1 SCOPE

This Specification covers the provisions and requirements relating to the provision of the temporary workforce. Reference is also made to the Basic Conditions of Employment Act (Act 75 of 1997) with specific reference to the Sectoral Determination 2: Civil Engineering Sector

C3.3.3.4.2 INTERPRETATIONS

C3.3.3.4.2.1 Supporting documents

The Tender Rules, Conditions of Contract, Standard and Project Specifications, Drawings and statutory minimum requirements relating to the employment and remuneration of labour shall *inter alia* be read in conjunction with this Specification.

C3.3.3.4.2.1.2 Definitions and abbreviations

For the purposes of this specification, the definitions given in the Conditions of Contract, the Standard Specifications and the Project Specifications, together with the following additional definitions shall, unless the context dictates otherwise, apply:

- (a) "Key Personnel" means all contracts managers, site agents, materials and survey technicians, trainers, supervisors, foremen, skilled plant operators, artisans and the like, and all other personnel in the permanent employ of the Contractor or Subcontractor who possess special skills and/or who play key roles in the Contractor's or Subcontractor's operation
- (b) "Project Committee" means a committee consisting of the Employer, the Engineer, the Contractor, (or their nominated representatives) as well as representatives of the temporary workforce, which is convened from time to time at the discretion of the Engineer, for the purposes of acting as an avenue for effective communication and liaison between all the parties referred to, in all matters pertaining to the Contract
- (c) "Subcontractor" means any person or group of persons in association, or firm, or body corporate (whether formally constituted or otherwise) not being the Contractor, to whom specific portions or aspects of the Works are sublet or subcontracted by the Contractor in accordance with the provisions of the Contract
- (d) "Worker" for the purposes of this Specification means any person, not being one of the Contractor's key personnel, nor any key personnel of any Subcontractor, who is engaged by the Contractor, a Subcontractor or the Employer to participate in the execution of any part of the Contract Works and shall include unskilled labour, semi-skilled and skilled labour, clerical workers and the like
- (e) "Workforce" means the aggregate body comprising all workers and shall, unless the context dictates otherwise, include the workforces of the Contractor and all Subcontractors
- (f) "Project Steering Committee (PSC)" means a committee comprising mainly of representatives (to a maximum of 10) of the affected communities with additional members from Blouberg Local Municipality, the Contractor, Consultants and the Municipality. The PSC convenes at least once a month as well as when the need so dictates, for the purpose of recruiting labour for the project, to address community issues and for acting as an avenue for effective communication and liaison between all the parties.
- (g) "Liaison Officer" means a local representative of the temporary workforce, duly appointed through the PSC processes, to act on behalf of the workers and through whom all matters pertaining to the temporary workforce can be channelled.

C3.3.3.4.2.1.3 Status

Where any provisions or requirements of this Specification are in conflict with anything elsewhere set out in the Contract, the provisions and requirements of this Specification shall take precedence and prevail.

C3.3.3.4.3 PERMITTED SOURCES OF TEMPORARY WORKERS

The Contractor shall as far as possible make optimum use of the human resources outside his own workforce and the workforces of all subcontractors. The temporary workforce that is to be used in the execution of the Works in terms of Part C3 may consist of the workers of local communities, and shall not be bound to one particular community.

C3.3.3.4.4 EMPLOYMENT RECORDS TO BE PROVIDED

- (a) The Contractor shall maintain accurate and comprehensive records of all workers engaged on the Contract and shall provide the Engineer at monthly intervals from the commencement of the Contract, with interim records substantiating the actual numbers of employment opportunities that shall have been generated to date and the amounts actually paid in respect thereof. Such interim records shall be in a Blouberg Local Municipality approved format. An example of the forms to be used is illustrated in Part C5 of this document, (forms RDP 9 and 10 (E)).
- (b) The Contractor shall, on completion of the Contract, and as a pre-requisite event to the release of any retention money in terms of the Conditions of Contract, provide the Municipality with copies of the Terms of

Employment as well as independently audited documentary evidence of the total number of temporary and permanent employment opportunities actually generated during the Contract.

C3.3.3.4.5 VARIATIONS IN WORKER PRODUCTION RATES

Notwithstanding anything to the contrary as may be stated in or inferred from any other provision of this Contract, the Contractor shall not be entitled to any additional payment or compensation whatever, in respect of any differences as may result between the production rates actually achieved by workers in the course of the execution of the Contract Works and those production rates on which he has based his tender.

C3.3.3.4.6 RECRUITMENT AND SELECTION PROCEDURES

C3.3.3.4.6.1 The Project Steering Committee, through the assistance of the Social Facilitator and the Contractor, shall be responsible for the recruitment and selection of the Community Liaison Officer and the workers to constitute the temporary workforce.

C3.3.3.4.6.2 The Contractor shall advise the Engineer in writing of the numbers of each category of temporary worker which he requires, together with the personal attributes which he considers desirable that each category of worker shall possess (taking due cognisance of the provisions of the Contract relating to training).

C3.3.3.4.6.3 The Social Facilitator shall take the necessary actions to advertise within the affected local communities comprising the personnel resources, the fact that temporary employment opportunities exist and the time and place where recruiting will occur

C3.3.3.4.6.4 The Social Facilitator shall record in writing, the details of all persons applying for employment, including *inter alia*:

- (a) Name, Identity Number, Date of Birth, age and sex
- (b) Marital status and number of dependants
- (c) Qualifications and previous work experience (whether substantiated or not)
- (d) On the job training programmes attended
- (e) Period since last economically active
- (f) Preference for type of work or task.

C3.3.3.4.6.5 The selection of workers from amongst the applicants should take into cognizance the Contractor's requirements for the workforce and the provisions of the contract in regard to the provision of training to the workforce and in accordance with the following principle:

- (a) No potential temporary worker shall be precluded from being employed by the Contractor on the execution of the Works, by virtue of his lack of skill in any suitable operation forming part of the Works, unless -
 - (i) all available vacancies have been or can be filled by temporary workers who already possess suitable skills, or
 - (ii) the Time for Completion allowed in the Contract, or the remaining portion of the Contract Period (as the case may be) is insufficient to facilitate the creation of the necessary skills.
- (b) Preference shall be given to the unemployed and single heads of households.
- (c) The Contractor shall, in so far as is reasonably practicable, give priority to accommodating the applicants' expressed preferences regarding the types of work for which they are selected.

(d) The selection process shall not be prejudicial to youth (over the age of fifteen years) and women. The Contractor should strive to achieve the participation target for employment set for this project which is 60% female and 20% youth.

C3.3.3.4.6.6 After making the selection, the Social Facilitator shall forward the list in writing and without undue delay, to the Engineer for record keeping.

C3.3.3.4.6.7 The provisions of this clause shall apply *mutatis mutandis* in respect of the selection of additional or replacement members of the workforce as may be necessary from time to time during the Contract.

C3.3.3.4.6.8 The Contractor shall, after appointing his temporary workforce, arrange at his own cost for the appointment of the Liaison Officer as representative of the workforce to act on their behalf with regards to all matters pertaining to the workforce.

C3.3.3.4.7 TERMS AND CONDITIONS PERTAINING TO THE EMPLOYMENT OF THE TEMPORARY WORKFORCE

C3.3.3.4.7.1 All temporary workers engaged in accordance with the provisions of Part A of the Project Specifications, shall be employed on the terms and conditions of employment as are consistent with those as set out in this Contract. The Contractor shall implement and adhere strictly to such terms and conditions relating to the employment of the temporary workforce, and subject only to the provisions of this Contract, shall not employ any temporary worker on terms and conditions which are less favourable to the worker or inconsistent with the standards and norms generally applicable to temporary workers in the Civil Engineering Industry and applicable to the particular area. Refer to the Contract of Employment drafted/published by Department of Labour.

C3.3.3.4.7.2 RATE OF REMUNERATION. The Contractor shall pay to all workers engaged in terms of the contract, not less than the applicable gazetted minimum rate of remuneration in terms of the Sectorial Determination 2: Civil Engineering Sector.

The remuneration of the CLO shall be paid monthly at the rate equivalent to Task Grade 3 in accordance with the provisions of the Basic Conditions of Employment Act, No. 75 of 1997, Amendment to Sectorial Determination 2: Civil Engineering Sector, South Africa

Compensation for transport for the members of the Project Steering Committee shall be made at a rate of R200 / month. This will cover for transport cost to and from the PSC meeting, site meeting and any other meeting deemed necessary to fulfil their obligations.

C3.3.3.4.7.3 NON-PAYMENT OF LABOURERS. Under this contract it is expected of the Main Contractor to ensure that all labourers are paid in time on a monthly basis, whether they are employed by him/her directly or by any of his/her subcontractors. In the event of non-compliance, the employer reserves the right to use any remedies available at its disposal.

C3.3.3.4.8 LABOUR RELATIONS AND WORKER GRIEVANCE PROCEDURES

C3.3.3.4.8.1 The Contractor, as the Employer of the workforce, shall be fully responsible for the establishment and maintenance at his own cost, of satisfactory labour relations on site and the resolution of all grievances of temporary workers as may occur. Refer to Disciplinary Procedures for Small Business drafted/published by Department of Labour.

C3.3.3.4.8.2 The Contractor shall at all times adhere to the accepted norms and standards of labour relations prevailing generally in the Civil Engineering Construction Industry and shall conduct himself in a fair and reasonable manner, within the constraints as may be imposed upon him by the terms of the Contract.

C3.3.3.4.8.3 In the event of any temporary worker engaged by the Contractor in terms of the Contract, being aggrieved with regard to his Terms of Employment, working conditions and training, he shall have the right, at his discretion, to be supported in any inquiry or disciplinary hearing or investigation instituted by the Contractor in terms of Sub-clause C3.4.3.4.9.2 above, by one member of the temporary workforce and one member of the Project Committee, which persons shall be nominated by the worker.

C3.3.3.4.8.4 In the event of any grievance not being satisfactorily resolved through the application of normal dispute resolution procedures in accordance with Sub clauses C3.3.3.4.8.2 and C3.4.3.4.8.3, then either the Contractor or the worker concerned may require that the matter be referred to the Project Committee for further consideration, with a view to facilitate the resolution thereof.

C3.3.3.4.9 THE SUBCONTRACTORS' WORKFORCES

C3.3.3.4.9.1 The provisions of this Part C shall apply *mutatis mutandis* to the workforces employed by all subcontractors engaged by the Contractor and the Contractor shall be fully responsible for ensuring, at his own cost, that the terms of every subcontract agreement entered into are such as to facilitate the application of these provisions in respect of the workforces of all subcontractors.

C3.3.3.4.9.2 The Contractor shall at his own cost and to the extent necessary, assist and monitor all subcontractors in the application of the provisions of this Specification, and shall, in terms of the Conditions of Contract, remain fully liable in respect of the acts, omissions and neglects of all subcontractors, in respect of the application of the provisions of this Specification.

C3.3.3.4.10 MEASUREMENT AND PAYMENT

The Contractor will not be separately reimbursed or compensated in respect of the provision of the workforce and creation of temporary employment opportunities and all the Contractor's costs associated with compliance with the provisions of this part of the Project Specifications shall, except to the extent provided for in Part C3.4.3.3. as relevant, be deemed to be included in the rates tendered for the various items of work listed in the Schedule of Quantities.

C3.4 MANAGEMENT

C3.4.1 MANAGEMENT MEETINGS

The following meetings will be required as minimum for the management of the contract.

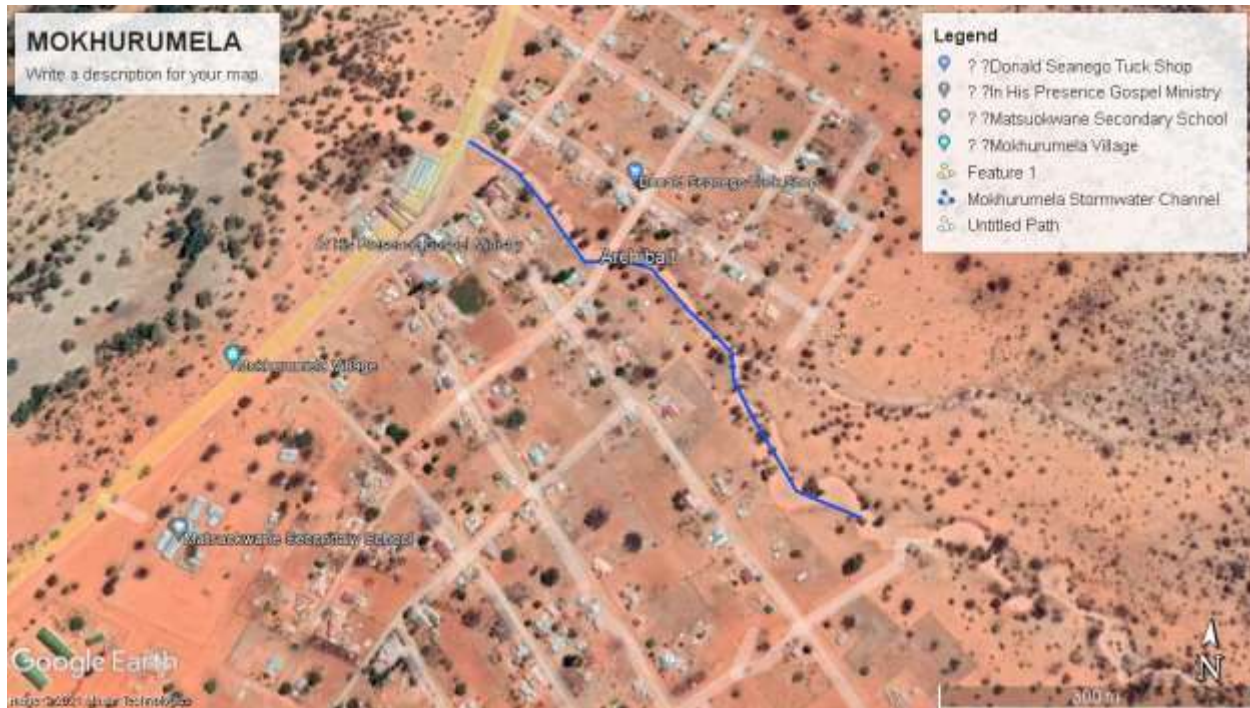
- (a) Monthly client site meeting (using standard agenda for management control).
- (b) Technical meetings as required for each phase of the work.
- (c) Monthly safety meetings in terms of the OHS requirements.
- (d) Weekly progress meetings

C3.4.2 QUALITY CONTROL

Contractor to supply details of quality plan and procedures. These shall include:

- Accommodation of traffic.
- Inspection and test plans.
- Approval process.
- Hold-points.
- Milestones

C4 SITE INFORMATION



**Project area locality:
Latitude -22.972121 and Longitude 28.701666**

NB!! MAKE SURE YOU INDEX ALL THE ATTACHMENTS FOR IDENTIFICATION

.....END.....